

The copyright © of this thesis belongs to its rightful author and/or other copyright owner. Copies can be accessed and downloaded for non-commercial or learning purposes without any charge and permission. The thesis cannot be reproduced or quoted as a whole without the permission from its rightful owner. No alteration or changes in format is allowed without permission from its rightful owner.



**IMPACT OF PERSONALITY TRAITS ON
ENTREPRENEURIAL INTENTIONS IN PAKISTAN:
THE MODERATING ROLE OF TEACHING
METHODOLOGY**



UUM
AQEEL ISRAR
Universiti Utara Malaysia

**DOCTOR OF PHILOSOPHY
UNIVERSITI UTARA MALAYSIA
August 2017**

IMPACT OF PERSONALITY TRAITS ON ENTREPRENEURIAL INTENTIONS
IN PAKISTAN: THE MODERATING ROLE OF TEACHING METHODOLOGY



By
AQEEL ISRAR
Universiti Utara Malaysia

Thesis Submitted to
Othman Yeop Abdullah Graduate School of Business
Universiti Utara Malaysia
in Fulfilment of the Requirement for the Degree of Doctor of Philosophy

PERMISSION TO USE

In presenting this thesis in fulfilment of the requirements for a Post Graduate degree from the Universiti Utara Malaysia (UUM), I agree that the Library of this university may make it freely available for inspection. I further agree that permission for copying this dissertation in any manner, in whole or in part, for scholarly purposes may be granted by my supervisor(s) or in their absence, by the Dean of School of Business Management, where I did my thesis. It is understood that any copying or publication or use of this dissertation or parts of it for financial gain shall not be allowed without my written permission. It is also understood that due recognition shall be given to me and to the UUM in any scholarly use which may be made of any material in my thesis.

Request for permission to copy or to make other use of materials in this dissertation in whole or in part should be addressed to:

Dean of School of Business Management
Universiti Utara Malaysia
06010 UUM, Sintok
Kedah Darul Aman



UUM
Universiti Utara Malaysia

ABSTRACT

An important aspect needed for promoting entrepreneurship is the identification of individuals possessing a specific personality suitable to foster entrepreneurial intentions. Entrepreneurial intentions can be strengthened among the students of the right personality type by endowing them with the required skills and knowledge using experiential teaching methodology. Therefore, this study focused on investigating teaching methodology as the moderating variable in the relationship between personality traits and entrepreneurial intentions. This study utilised the dynamic view of Entrepreneurial Event Model. Data was collected using the stratified proportionate random sampling through a cross-sectional survey of 315 students of sixteen universities in Islamabad, Pakistan. The study used structural equation modelling to test the inter-relationship among the variables. Finding of this study reveals a significant and positive relationship between personality (entrepreneurial proactivity, entrepreneurial creativity, entrepreneurial opportunism and entrepreneurial vision) and entrepreneurial intentions. Moreover, the study further tests the impact of teaching methodologies adopted by lecturers of entrepreneurship in the university. Finding also reveals that experiential teaching methodology has a moderating impact on the relationship between entrepreneurial creativity, entrepreneurial vision and entrepreneurial intentions. Furthermore, teaching methodology does not have a significant moderating influence on the relationship between entrepreneurial proactivity and entrepreneurial intentions, and entrepreneurial vision and entrepreneurial intentions. This study contributes to the literature by suggesting that appropriate experiential teaching methodologies strengthen entrepreneurial intentions. This study provides empirical evidence on personality, teaching methodology and entrepreneurial intentions within the domain of Entrepreneurial Event Model and Human Capital Theory, in the context of Pakistan. The results of this study have implications for students, entrepreneurship teachers, university management, incubation centre managers and policy makers. Finally, limitation of the study and future research directions are discussed.

Keywords: personality, entrepreneurial intentions, teaching methodology, proactivity, creativity, opportunism, vision.

ABSTRAK

Aspek penting yang diperlukan untuk menggalakkan keusahawanan ialah mengenal pasti individu yang memiliki personaliti tertentu yang sesuai untuk memupuk niat keusahawanan. Niat keusahawanan dapat diperkukuhkan dalam kalangan pelajar melalui jenis personality yang betul dengan cara menyediakan mereka dengan kemahiran dan pengetahuan yang diperlukan menggunakan metodologi pembelajaran pengalaman. Oleh itu, kajian ini memberikan tumpuan kepada penyelidikan terhadap metodologi pengajaran sebagai pemboleh ubah pengantara dalam hubungan di antara ciri personaliti dengan niat keusahawanan. Kajian ini menggunakan pandangan dinamik Model Aktiviti Keusahawanan. Data dikumpulkan menggunakan persampelan rawak berstrata melalui kaji selidik keratin rentas terhadap 315 orang pelajar di enam belas buah universiti di Islamabad, Pakistan. Kajian turut menggunakan pemodelan persamaan berstruktur untuk menguji hubungan antara pemboleh ubah. Dapatan kajian ini mendedahkan hubungan yang signifikan dan positif antara personaliti (proaktif keusahawanan, kreativiti keusahawanan, oportunisme keusahawanan dan wawasan keusahawanan) dengan niat keusahawanan. Selain itu, kajian ini juga menguji kesan kaedah pengajaran yang diguna pakai oleh pensyarah keusahawanan di universiti. Penemuan juga mendedahkan bahawa metodologi pengajaran melalui pembelajaran pengalaman mempunyai kesan pengantara terhadap hubungan antara kreativiti keusahawanan, visi keusahawanan dan niat keusahawanan. Tambahan pula, metodologi pengajaran tidak mempunyai kesan pengantaraan yang signifikan terhadap hubungan antara keusahawanan proaktif dengan niat keusahawanan, dan visi keusahawanan dengan niat keusahawanan. Kajian ini menyumbang kepada literatur dengan mendedahkan bahawa metodologi pembelajaran pengalaman yang sesuai dapat memperkuat niat keusahawanan. Kajian ini turut memberikan bukti empirik terhadap personaliti, metodologi pengajaran dan niat keusahawanan dalam domain Model Aktiviti Keusahawanan dan Teori Modal Insan dalam konteks negara Pakistan. Hasil kajian ini memberikan implikasi kepada pelajar, tenaga pengajar keusahawanan, pengurusan universiti, pengurus pusat inkubasi dan pembuat dasar. Akhir sekali, batasan kajian dan arah tuju untuk penyelidikan pada masa hadapan juga dibincangkan.

Kata kunci: personaliti, niat keusahawanan, metodologi pengajaran, proaktif, kreativiti, oportunisme, visi

ACKNOWLEDGEMENTS

With the name of Allah (SWT), the most gracious, the most merciful.

All praise is due to Allah (SWT) for giving me the strength, capabilities and thirst for knowledge to pursue this tremendous endeavour.

Firstly, I would like to express my sincere gratitude to my supervisor, Associate Professor. Dr. Norashidah Hashim, for the continuous support during my Ph.D study and research. She always had a kind word of advice and guided me through my Ph.D through motivation, patience and knowledge. She has been a source of guidance and inspiration which helped me in all the time of research and writing of this thesis. My prayers for the most kind and knowledgeable supervisor in my Ph.D were definitely answered by Allah (SWT).

Along with my supervisor, I would like to thank my defence committee: Professor. Dr. Nor Aishah Buang, Associate Professor. Dr. Ooi Yeng Keat, and Associate Professor. Dr. Muhammad Shukri Bakar, for their insightful comments and encouragement, but also for the hard questions which motivated me to improve my research from various angles.

My sincere thanks also go to Associate Professor Dr. Norashidah Hashim, Dr. Sahadah Abdullah, and Dr. Thi Lip Sam, who provided me with an opportunity to join as a graduate teaching assistant. This position increased me in my experience of teaching in a diverse international environment having the high standards and requirements of AACSB.

I would also like to express my gratitude to my PhD coursework teachers, Prof. Dr. Noor Azizi Ismail and Prof. Dr. Sany Sanuri for introducing and solidifying me in the path of academic research. I am also grateful to Higher Education Commission (HEC), Government of Pakistan, who entrusted me with the scholarship to pursue my doctoral degree.

I thank my fellow PhD scholars, particularly Naveed Altaf, Dr. Ashfaq Ahmad, and Dr. Muzaffar Asad, for late night discussions on research, teaching, academia, infiniteness of numbers and universe, comparative religion and other numerous interesting topics.

Lastly, I would like to thank my family: my father Israr Ahmad, my mother, Kausar, my wife, Neelum Aqeel and my sons, Ryyan, Hassaan, Nauman and Salman. Your support and prayers in countless areas of life and encouragement helped me to get where I am today. I strive to excel in life for all of you.

TABLE OF CONTENTS

| | |
|---|-------------|
| CERTIFICATION OF THESIS WORK | ii |
| PERMISSION TO USE | iv |
| ABSTRACT | v |
| ABSTRAK | vi |
| ACKNOWLEDGEMENTS | vii |
| TABLE OF CONTENTS | viii |
| LIST OF TABLES | xi |
| LIST OF FIGURES | xii |
| LIST OF ABBREVIATIONS | xiii |
| | |
| CHAPTER ONE : INTRODUCTION | 1 |
| 1.1 Background of the Study | 1 |
| 1.2 Problem Statement | 8 |
| 1.3 Research Questions | 17 |
| 1.4 Research Objectives | 18 |
| 1.5 Scope of the Study | 19 |
| 1.6 Significance of the Study | 20 |
| 1.7 Pakistan: A Brief Overview | 23 |
| 1.8 Definition of Key Terms | 25 |
| 1.9 Organisation of the Thesis | 27 |
| | |
| CHAPTER TWO : LITERATURE REVIEW | 29 |
| 2.1 Introduction | 29 |
| 2.2 Entrepreneurial Intentions | 29 |
| 2.3 Measures of Entrepreneurial Traits and Abilities (META) | 36 |
| 2.3.1 Entrepreneurial proactivity. | 39 |
| 2.3.2 Entrepreneurial creativity. | 42 |
| 2.3.3 Entrepreneurial opportunism. | 44 |
| 2.3.4 Entrepreneurial vision. | 46 |
| 2.4 Teaching Methodology | 49 |
| 2.5 Underpinning Theories | 57 |
| 2.5.1 Entrepreneurial event model. | 58 |
| 2.5.1.1 Perceived desirability and perceived feasibility. | 60 |
| 2.5.1.2 Propensity to act. | 61 |
| 2.5.1.3 Application of entrepreneurial event model. | 62 |
| 2.5.2 Human capital theory. | 63 |
| 2.6 Hypothesis Development | 67 |
| 2.6.1 Entrepreneurial proactivity and entrepreneurial intentions. | 68 |
| 2.6.2 Entrepreneurial creativity and entrepreneurial intentions. | 69 |
| 2.6.3 Entrepreneurial opportunism and entrepreneurial intentions. | 71 |
| 2.6.4 Entrepreneurial vision and entrepreneurial intentions. | 73 |
| 2.6.5 Moderating role of teaching methodology. | 74 |
| 2.7 Research Framework | 76 |
| 2.8 Summary | 79 |
| | |
| CHAPTER THREE : RESEARCH METHODOLOGY | 81 |
| 3.1 Introduction | 81 |

| | | |
|--|---|------------|
| 3.2 | Research Design | 81 |
| 3.2.1 | Research methods. | 82 |
| 3.2.2 | Unit of analysis. | 83 |
| 3.2.3 | Time frame of study. | 84 |
| 3.3 | Population, Sample and Sampling Process | 84 |
| 3.3.1 | Population. | 84 |
| 3.3.2 | Sampling frame. | 86 |
| 3.3.3 | Determination of sample size. | 87 |
| 3.3.4 | The sampling technique. | 89 |
| 3.4 | Research Instrument | 90 |
| 3.5 | Operationalisation and Measurement of Variables | 93 |
| 3.5.1 | Entrepreneurial intentions. | 94 |
| 3.5.2 | Entrepreneurial proactivity. | 95 |
| 3.5.3 | Entrepreneurial creativity. | 96 |
| 3.5.4 | Entrepreneurial opportunism. | 97 |
| 3.5.5 | Entrepreneurial vision. | 98 |
| 3.5.6 | Teaching methodology. | 99 |
| 3.6 | Measurement Scale | 101 |
| 3.7 | Pilot / Preliminary Test | 101 |
| 3.7.1 | Validity test. | 102 |
| 3.7.2 | Reliability test. | 103 |
| 3.8 | Data Collection | 104 |
| 3.8.1 | Data collection method | 104 |
| 3.8.2 | Data collection procedure | 105 |
| 3.8.3 | Non-response bias | 106 |
| 3.9 | Data Analysis Technique | 107 |
| 3.9.1 | Reliability test. | 109 |
| 3.9.2 | Normality test. | 109 |
| 3.9.3 | Multicollinearity. | 110 |
| 3.9.4 | Structural Equation Modelling. | 110 |
| 3.10.4.1 | Composite reliability. | 110 |
| 3.10.4.2 | Average variance extracted. | 111 |
| 3.10.4.3 | Significance level. | 111 |
| 3.10 | Summary | 111 |
| CHAPTER FOUR : RESULTS AND FINDINGS | | 113 |
| 4.1 | Introduction | 113 |
| 4.2 | Survey Response | 113 |
| 4.3 | Data Screening and Preliminary Analysis | 114 |
| 4.3.1 | Missing value analysis. | 115 |
| 4.3.2 | Assessment of outliers. | 116 |
| 4.3.3 | Normality test. | 117 |
| 4.3.4 | Multicollinearity test. | 119 |
| 4.4 | Common Method Variance Test | 121 |
| 4.5 | Demographic Profile of the Respondents | 122 |
| 4.6 | Descriptive Analysis of the Latent Constructs | 126 |
| 4.7 | Assessment of PLS-SEM Path Model Results | 128 |
| 4.8 | Assessment of Measurement Model | 129 |
| 4.8.1 | Individual item reliability. | 130 |
| 4.8.2 | Internal consistency reliability. | 132 |

| | | |
|---|---|----------------|
| 4.8.3 | Convergent validity. | 134 |
| 4.8.4 | Discriminant validity. | 135 |
| 4.9 | Assessment and Significance of the Structural Model | 137 |
| 4.9.1 | Assessment of variance explained in criterion variables. | 140 |
| 4.9.2 | Assessment of effect size (f^2). | 141 |
| 4.9.3 | Assessment of predictive relevance. | 142 |
| 4.9.4 | Testing moderating effect. | 144 |
| 4.9.5 | Determining the strength of the moderating effects. | 147 |
| 4.10 | Summary of Findings | 149 |
| 4.11 | Summary | 150 |
| CHAPTER FIVE : DISCUSSION, CONCLUSION AND RECOMMENDATION | | 151 |
| 5.1 | Introduction | 151 |
| 5.2 | Recapitulation of the Study | 151 |
| 5.3 | Discussion | 153 |
| 5.3.1 | The relationship between personality and entrepreneurial intentions. | 153 |
| 5.3.1.1 | The relationship between entrepreneurial proactivity and entrepreneurial intentions. | 154 |
| 5.3.1.2 | The relationship between entrepreneurial creativity and entrepreneurial intentions. | 155 |
| 5.3.1.3 | The relationship between entrepreneurial opportunism and entrepreneurial intentions. | 157 |
| 5.3.1.4 | The relationship between entrepreneurial vision and entrepreneurial intentions. | 158 |
| 5.3.2 | The moderating effect of teaching methodology. | 160 |
| 5.3.2.1 | The moderating effect of teaching methodology on the relationship between entrepreneurial proactivity and entrepreneurial intentions. | 160 |
| 5.3.2.2 | The moderating effect of teaching methodology on the relationship between entrepreneurial creativity and entrepreneurial intentions. | 162 |
| 5.3.2.3 | The moderating effect of teaching methodology on the relationship between entrepreneurial opportunism and entrepreneurial intentions. | 164 |
| 5.3.2.4 | The moderating effect of teaching methodology on the relationship between entrepreneurial vision and entrepreneurial intentions. | 166 |
| 5.4 | Contributions of the Study | 167 |
| 5.4.1 | Theoretical implications. | 168 |
| 5.4.2 | Practical implications. | 172 |
| 5.5 | Limitations and Future Research Directions | 176 |
| 5.5.1 | Limitations. | 176 |
| 5.5.2 | Future research directions. | 178 |
| 5.6 | Conclusion | 181 |
| REFERENCES | | 183 |
| APPENDICES | | 210 |

LIST OF TABLES

| Table | Title | Page |
|--------------|---|-------------|
| Table 2.1 | Selected studies using META instrument | 39 |
| Table 2.2 | Selected studies on Entrepreneurial Proactivity | 41 |
| Table 2.3 | Selected studies on Entrepreneurial Creativity | 43 |
| Table 2.4 | Selected studies on Entrepreneurial Opportunism | 46 |
| Table 2.5 | Selected studies on Entrepreneurial Vision | 48 |
| Table 3.1 | Table for Determining Sample Size for a Given Population | 88 |
| Table 3.2 | Total Working Population for HEIs | 89 |
| Table 3.3 | Summary of Measures of Variables | 92 |
| Table 3.4 | Reliability Coefficients of the Constructs in Previous Studies | 93 |
| Table 3.5 | Measurement Items for Entrepreneurial Intentions | 95 |
| Table 3.6 | Measurement Items for Entrepreneurial Proactivity | 96 |
| Table 3.7 | Measurement Items for Entrepreneurial Creativity | 97 |
| Table 3.8 | Measurement Items for Entrepreneurial Opportunism | 98 |
| Table 3.9 | Measurement Items for Entrepreneurial Vision | 99 |
| Table 3.10 | Measurement Items for Teaching Methodology | 100 |
| Table 3.11 | Reliability Test | 103 |
| Table 4.1 | Response Rate of the Questionnaires | 114 |
| Table 4.2 | Total and Percentage of Missing Values | 116 |
| Table 4.3 | Result of Skewness and Kurtosis for Normality Test | 119 |
| Table 4.4 | Correlation Matrix of the Predictor Variables | 120 |
| Table 4.5 | Tolerance and Variance Inflation Factors (VIF) | 120 |
| Table 4.6 | Demographic Characteristics of the Respondents | 122 |
| Table 4.7 | Mean Value Interpretation | 126 |
| Table 4.8 | Descriptive Statistics for Latent Variables | 127 |
| Table 4.9 | Loadings, Composite Reliability and Average Variance Extracted (AVE) | 133 |
| Table 4.10 | Latent Variable Correlations and Square Roots of Average Variance Extracted (AVE) | 136 |
| Table 4.11 | Cross Loadings | 136 |
| Table 4.12 | Structural Model Assessment with Moderator (Full Model) | 139 |
| Table 4.13 | Variance Explained in the Criterion Variable | 141 |
| Table 4.14 | Effect Sizes of the Latent Variables on Cohen's (1988) Recommendation | 142 |
| Table 4.15 | Construct Cross-Validated Redundancy | 143 |
| Table 4.16 | Strength of the Moderating Effects | 149 |
| Table 4.17 | Summary of Hypotheses Testing | 149 |

LIST OF FIGURES

| Figure | Title | Page |
|---------------|--|-------------|
| Figure 1.1 | Business Universities in Islamabad | 24 |
| Figure 2.1 | Entrepreneurial Event Model (Shapero & Sokol, 1982) | 60 |
| Figure 2.2 | Research Framework | 79 |
| Figure 4.1 | Histogram and Normal Probability Plots | 118 |
| Figure 4.2 | A Two-Step Process of PLS Path Model Assessment | 128 |
| Figure 4.3 | Research Model | 130 |
| Figure 4.4 | Measurement Model | 131 |
| Figure 4.5 | Structural Model with Moderator (Full Model) | 138 |
| Figure 4.6 | Interaction Effect of Entrepreneurial Creativity and Teaching Methodology on Entrepreneurial Intentions | 146 |
| Figure 4.7 | Interaction Effect of Entrepreneurial Opportunism and Teaching Methodology on Entrepreneurial Intentions | 147 |



LIST OF ABBREVIATIONS

| | |
|-------------|--|
| AHAN | Aik Hunar Aik Nagar |
| CIPE | Centre for International Private Enterprise |
| AVE | Average Variance Extracted |
| BIC | Business Incubation Centre |
| CMV | Common Method Variance |
| EC | Entrepreneurial Creativity |
| EEM | Entrepreneurial Event Model |
| EEP | Entrepreneurship Education Program |
| EI | Entrepreneurial Intentions |
| EIQ | Entrepreneurial Intentions Questionnaire |
| EO | Entrepreneurial Opportunism |
| EP | Entrepreneurial Proactivity |
| EV | Entrepreneurial Vision |
| FFM | Five Factor Model |
| GDP | Gross Domestic Product |
| GEI | Global Education Initiative |
| GEM | Global Entrepreneurship Monitor |
| GERA | Global Entrepreneurship Research Association |
| GoF | Goodness of Fit |
| GUESSS | Global University Entrepreneurial Spirit Students' Survey |
| HCT | Human Capital Theory |
| HEC | Higher Education Commission |
| HEI | Higher Education Institution |
| ICT | Islamabad Capital Territory |
| LID | Learning Innovation Division |
| MBA | Master of Business Administration |
| META | Measure of Entrepreneurial Tendency and Ability |
| NEMIS-AEPAM | National Educational Management Information System - Academy of Educational Planning and Management |
| NGF | New Growth Framework |
| ORIC | Office of Research, Innovation and Commercialisation |
| PBC | Perceived Behavioural Control |
| PLS-SEM | Partial Least Squares – Structural Equation Modelling |
| SME | Small and Medium Enterprises |
| SMEDA | Small and Medium Enterprise Development Authority |
| TEA | Total Entrepreneurial Activity |
| TEVTA | Technical Education and Vocational Training Authority |
| TPB | Theory of Planned Behaviour |
| TM | Teaching Methodology |
| VIF | Variance Inflation Factor |
| WBIC | Women Business Incubation Centre |
| WEF | World Economic Forum |

LIST OF APPENDICES

| | | |
|------------|----------------------------------|-----|
| APPENDIX A | Questionnaire | 210 |
| APPENDIX B | Permission to use Questionnaire | 214 |
| APPENDIX C | Additional Data Analysis Results | 216 |



CHAPTER ONE

INTRODUCTION

1.1 Background of the Study

Entrepreneurial ventures are the dominant birthplace of innovation, employment creation and economic growth. With the capacity to alter existing industries or create new ones (Schumpeter, 1934), the innovative contributions of these entrepreneurial initiatives have profound effects on employment and economic growth on the societal level (McGrath, 1999). Entrepreneurship has become the source of wealth creation and economic stability; more wealth has been created within the past 50 years than any time period (Capgemini & RBC Wealth Management, 2013). Given this previous incremental growth coupled with the more recent exponential rise in awareness about entrepreneurship and self-employment, it is reasonable to propose that entrepreneurship plays a pivotal role in fostering individual, national and global economic growth (Planning Commission, Government of Pakistan, 2011).

Furthermore, entrepreneurship is considered as the backbone of any economy assisting in direct economic growth (Sautet, 2013; Holmén & McKelvey, 2013; Guerrero, Cunningham, & Urbano, 2015) and reduction in poverty (Bruton, Ketchen, & Ireland, 2013; Alvarez, Barney, & Newman, 2015; Bruton, Ahlstrom, & Si, 2015) as well as creating employment opportunities (Audretsch, 2012; Acs, Audretsch, & Lehmann, 2013). The European Commission credits 66.9% of the employment to Small and Medium Enterprises (SMEs) originating as a result of entrepreneurial intentions (Muller, et al., 2015). In Pakistan, SMEs constitute 90% of all enterprises

The contents of
the thesis is for
internal user
only

REFERENCES

- Achchuthan, S., & Nimalathasan, B. (2014). Level of entrepreneurial intention of the management undergraduates in the University of Jaffna, Sri Lanka: scholars and undergraduates perspective. *South Asian Academic Research Journals*, 10, 24-42.
- Ackerman, P. L., & Humphreys, L. G. (1990). Individual differences theory in industrial and organizational psychology. In *Handbook of industrial and organizational psychology* (pp. 223-282). Wiley.
- Acs, Z. J., Audretsch, D. B., & Lehmann, E. E. (2013). The knowledge spillover theory of entrepreneurship. *Small Business Economics*, 41(4), 757-774. doi:10.1007/s11187-013-9505-9
- Afthanorhan, W. M. (2013). A comparison of partial least square structural equation modeling (PLS-SEM) and covariance based structural equation modeling (CB-SEM) for confirmatory factor analysis. *International Journal of Engineering Science and Innovative Technology*, 2(5), 198-205.
- Ahlin, B., Drnovšek, M., & Hisrich, R. D. (2014). Entrepreneurs' creativity and firm innovation: the moderating role of entrepreneurial self-efficacy. *Small Business Economics*, 43(1), 101-117. doi:10.1007/s11187-013-9531-7
- Ahmed, I., Nawaz, M. M., Ahmad, Z., Shaukat, M. Z., Usman, A., Rehman, W.-U., & Ahmed, N. (2010). Determinants of students' entrepreneurial career intentions: Evidence from business graduates. *European Journal of Social Sciences*, 15(2), 14-22.
- Ahmed, S. (2016, 05 29). Pakistan Observer. Retrieved from Pakistan Observer: <http://pakobserver.net/2016/05/29/white-house-invites-dr-umar-saif-to-global-entrepreneurship-summit/>
- Ahmetoglu, G., & Chamorro-Premuzic. (2010). Measure of entrepreneurial tendencies and abilities. Unpublished Measure (available on request).
- Ahmetoglu, G., Harding, X., Akhtar, R., & Chamorro-Premuzic, T. (2015). Predictors of creative achievement: Assessing the impact of entrepreneurial potential, perfectionism, and employee engagement. *Creativity Research Journal*, 27(2), 198-205. doi:10.1080/10400419.2015.1030293
- Ahmetoglu, G., Leutner, F., & Chamorro-Premuzic, T. (2011). EQ-nomics: Understanding the relationship between individual differences in trait emotional intelligence and entrepreneurship. *Personality and Individual Differences*, 51(8), 1028-1033.
- Ajzen, I. (1991). The theory of planned behavior. *Organizational Behavior and Human Decision Processes*, 50(2), 179-211. doi:10.1016/0749-5978(91)90020-T

- Ali, S., Lu, W., & Wang, W. (2013). Comparison of entrepreneurial intentions among college students in China and Pakistan. *International Journal of Pluralism and Economics Education*, 4(1), 51-60.
- Almeida, P. I., Ahmetoglu, G., & Chamorro-Premuzic, T. (2014). Who wants to be an entrepreneur? The relationship between vocational interests and individual differences in entrepreneurship. *Journal of Career Assessment*, 22(1), 102-112. doi:10.1177/1069072713492923
- Almobaireek, W. N., & Manolova, T. S. (2012). Who wants to be an entrepreneur? Entrepreneurial intentions among Saudi university students. *African Journal of Business Management*, 6(11), 4029-4040.
- Altinay, L., Madanoglu, M., Daniele, R., & Lashley, C. (2012). The influence of family tradition and psychological traits on entrepreneurial intention. *International Journal of Hospitality Management*, 31(2), 489-499. doi:10.1016/j.ijhm.2011.07.007
- Alvarez, S. A., Barney, J. B., & Newman, A. M. (2015). The poverty problem and the industrialization solution. *Asia Pacific Journal of Management*, 32(1), 23-37. doi:10.1007/s10490-014-9397-5
- Anabela, D., Arminda, d. P., João, F., Mário, R., & Ricardo, G. R. (2013). Psychological characteristics and entrepreneurial intentions among secondary students. *Education + Training*, 55(8), 763-780. doi:10.1108/ET-06-2013-0085
- Armitage, C., & Conner, M. (2001). Efficacy of the theory of planned behavior: A meta-analytic review. *British Journal of Social Psychology*, 40, 471-499.
- Armstrong, J. S., & Overton, T. S. (1977). Estimating nonresponse bias in mail surveys. *Journal of Marketing Research*, 14(3), 396-402. doi:10.2307/3150783
- Arranz, N., Ubierna, F., Arroyabe, M. F., Perez, C., & Arroyabe, J. F. (2016). The effect of curricular and extracurricular activities on university students' entrepreneurial intention and competences. *Studies in Higher Education*, 1-30. doi:10.1080/03075079.2015.1130030
- Arribas, I., Hernández, P., Urbano, A., & Vila, J. E. (2012). Are social and entrepreneurial attitudes compatible?: A behavioral and self-perceptual analysis. *Management Decision*, 50(10), 1739-1757. doi:10.1108/00251741211279576
- Ashourizadeh, S., Chavoushi, Z. H., & Schøtt, T. (2014). People's confidence in innovation: A component of the entrepreneurial mindset, embedded in gender and culture, affecting entrepreneurial intention. *International Journal of Entrepreneurship and Small Business*, 23(2), 235-251. doi:10.1504/IJESB.2014.065310
- Aslam, T. M., Awan, A. S., & Khan, T. M. (2012). An empirical study of family back ground and entrepreneurship as career chosen among university students

- of Turkey and Pakistan. *International Journal of Business and Social Science*, 3(15), 118.
- Åsvoll, H., & Jacobsen, P. J. (2012). A case study: Action based entrepreneurship education how experience problems can be overcome and collaboration problems mitigated. *Journal of Entrepreneurship Education*, 15, 75-97.
- Audet, J. (2002). A longitudinal study of the entrepreneurial intentions of university students. Babson Kaufmann Entrepreneurship Research Conference. Boulder, Colorado.
- Audretsch, D. (2012). Entrepreneurship research. *Management Decision*, 50(5), 755-764. doi:10.1108/00251741211227384
- Awang, A., Amran, S., Nor, M. N., Ibrahim, I. I., & Razali, M. F. (2016). Individual entrepreneurial orientation impact on entrepreneurial intention: intervening effect of PBC and subjective norm. *Journal of Entrepreneurship, Business and Economics*, 4(2), 94-129.
- Baba, A. (1997). *Statistik penyelidikan dalam pendidikan dan sains sosial*. Penerbit Universiti Kebangsaan Malaysia.
- Babbie, E. R. (2013). *The Basics of Social Research* (6 ed.). Berkeley, California: Wadsworth Publishing.
- Bacon, D. R., Sauer, P. L., & Young, M. (1995). Composite reliability in structural equations modeling. *Educational and Psychological Measurement*, 55, 394-406. doi:10.1177/0013164495055003003
- Bae, T. J., Qian, S., Miao, C., & Fiet, J. O. (2014). The relationship Between entrepreneurship education and entrepreneurial intentions: A meta-analytic review. *Entrepreneurship Theory and Practice*, 38(2), 217-254. doi:10.1111/etap.12095
- Bagozzi, R., & Yi, Y. (1988). On the evaluation of structural equation models. *Journal of the Academy of Marketing Science*, 16, 74-94. doi:10.1007/bf02723327
- Baptista, R., Karaöz, M., & Mendonça, J. (2013). The impact of human capital on the early success of necessity versus opportunity-based entrepreneurs. *Small Business Economics*, 42(4). doi:10.1007/s11187-013-9502-z
- Barclay, D., Higgins, S., & Thompson, R. (1995). The partial least squares approach to causal modelling: Personal computer adoption and use as an illustration. *Technology Studies*, 2, 285-374.
- Barnett, V., & Lewis, T. (1994). *Outliers in statistical data*. New York: Wiley.
- Baron, R. M., & Kenny, D. A. (1986). The moderator–mediator variable distinction in social psychological research: Conceptual, strategic, and statistical considerations. *Journal of Personality and Social Psychology*, 51(6), 1173-1182. doi:10.1037/0022-3514.51.6.1173

- Baum, J. R., Frese, M., Baron, R. A., & Katz, J. A. (2007). Entrepreneurship as an area of psychology study: An introduction. In *The psychology of entrepreneurship* (pp. 1-18).
- Baum, J. R., Locke, E. A., & Smith, K. G. (2001). A multidimensional model of venture growth. *Academy of Management Journal*, 44(2), 292-303. doi:10.2307/3069456
- Becker, G. S. (1964). *Human capital: A theoretical and empirical analysis, with special reference to education* (1st ed.). London: Columbia University Press.
- Becker, J.-M., Klein, K., & Wetzels, M. (2012). Hierarchical latent variable models in PLS-SEM: Guidelines for using reflective-formative type models. *Long Range Planning*, 45(5/6), 359–394. doi:10.1016/j.lrp.2012.10.001
- Belás, J., Bilan, Y., Demjan, V., & Sipko, J. (2015). Entrepreneurship in SME segment: Case study from the Czech Republic and Slovakia. *Amfiteatru Economic*, 17(38), 308-326.
- Bennett, R. J., & Robinson, S. L. (2000). Development of a measure of workplace deviance. *Journal of Applied Psychology*, 85, 349-360. doi:10.1037/0021-9010.85.3.349
- Berry, W. D., & Feldman, S. (1985). *Multiple Regression in Practice*. Minnesota: SAGE.
- Bijttebier, P., Delva, D., Vanoost, S., Bobbaers, H., Lauwers, P., & Vertommen, H. (2000). Reliability and validity of the critical care family needs inventory in a Dutch-speaking Belgian sample. *Heart & Lung: The Journal of Acute and Critical Care*, 29, 278-286. doi:10.1067/mhl.2000.107918
- Bird, B. (1988). Implementing entrepreneurial ideas: The case for intention. *Academy of Management Review*, 13(1), 442-453. doi:10.5465/AMR.1988.4306970
- Brandstätter, H. (2011). Personality aspects of entrepreneurship: A look at five meta-analyses. *Personality and Individual Differences*, 51(3), 222-230. doi:10.1016/j.paid.2010.07.007
- Brännback, M., & Carsrud, A. (2009). *Cognitive maps in entrepreneurship: Researching sense making and action*. New York: Springer.
- Brettel, M., Chomik, C., & Flatten, T. C. (2015). How organizational culture influences innovativeness, proactiveness, and risk-taking: Fostering entrepreneurial orientation in SMEs. *Journal of Small Business Management*, 53(4), 868–885. doi:10.1111/jsbm.12108
- Brush, C. G., Greene, P. G., & Hart, M. M. (2001). From initial idea to unique advantage: The entrepreneurial challenge of constructing a resource base. *Academy of Management Perspectives*, 15(1), 64-78. doi:10.5465/AME.2001.4251394

- Bruton, G. D., Ahlstrom, D., & Si, S. (2015). Entrepreneurship, poverty, and Asia: Moving beyond subsistence entrepreneurship. *Asia Pacific Journal of Management*, 32(1), 1-22. doi:10.1007/s10490-014-9404-x
- Bruton, G. D., Ketchen, D. J., & Ireland, R. D. (2013). Entrepreneurship as a solution to poverty. *Journal of Business Venturing*, 28(6), 683–689. doi:10.1016/j.jbusvent.2013.05.002
- Buana, Y., Hidayat, D., Prayogi, B., & Vendy, V. (2017). The effect of entrepreneurship education on entrepreneurial intention of university students by adopting linan model. *Binus Business Review*, 8(1), 67-75.
- Bygrave, W., & Minniti, M. (2000). The social dynamics of entrepreneurship. *Entrepreneurship: Theory and Practice*, 24(3), 25-25.
- Caliendo, M., Fossen, F., & Kritikos, A. S. (2014). Personality characteristics and the decisions to become and stay self-employed. *Small Business Economics*, 42(4), 787-814. doi:10.1007/s11187-013-9514-8
- Cameron, A. C., & Trivedi, P. K. (2013). *Regression analysis of count data*. New York: Cambridge University Press.
- Capgemini & RBC Wealth Management. (2013). *World wealth report*. Retrieved from https://www.capgemini.com/resource-file-access/resource/pdf/wwr_2013_0.pdf
- Carland, J. W., & Carland, J. C. (1997). A model of potential entrepreneurship: Profiles and educational implications. *Journal of Small Business Strategy*, 8(1), 1-14.
- Carr, J. C., & Sequeira, J. M. (2007). Prior family business exposure as intergenerational influence and entrepreneurial intent: A theory of planned behavior approach. *Journal of Business Research*, 60(10), 1090-1098. doi:10.1016/j.jbusres.2006.12.016
- Carsrud, A., & Brännback, M. (2011). Entrepreneurial motivations: What do we still need to know? *Journal of Small Business Management*, 49(1), 9-26. doi:10.1111/j.1540-627X.2010.00312.x
- Cassel, C., Hackl, P., & Westlund, A. H. (1999). Robustness of partial least-squares method for estimating latent variable quality structures. *Journal of Applied Statistics*, 26, 435-446. doi:10.1080/02664769922322
- Chamorro-Premuzic, T. (2011). *Personality and Individual Differences* (2nd ed.). Oxford: Wiley-Blackwell.
- Chandler, G. N., & Hanks, S. H. (1998). An examination of the substitutability of founders human and financial capital in emerging business ventures. *Journal of Business Venturing*, 13(5), 353–369. doi:10.1016/S0883-9026(97)00034-7

- Chandler, G. N., & Lyon, D. W. (2001). Issues of research design and construct measurement in entrepreneurship research: The past decade. *Entrepreneurship: Theory and Practice*, 25(4), 101-114.
- Chatterjee, S., & Yilmaz, M. (1992). A Review of regression diagnostics for behavioral research. *Applied Psychological Measurement*, 16, 209-227. doi:10.1177/014662169201600301
- Chen, C. C., Greene, P. G., & Crick, A. (1998). Does entrepreneurial self-efficacy distinguish entrepreneurs from managers? *Journal of Business Venturing*, 13(4), 295-316. doi:10.1016/S0883-9026(97)00029-3
- Chen, H. L., & Hsu, C.-H. (2013). Entrepreneurial orientation and firm performance in non-profit service organizations: Contingent effect of market orientation. *The Service Industries Journal*, 33(5), 445-466. doi:10.1080/02642069.2011.622372
- Chernick, M. R. (2008). *Bootstrap methods. A guide for practitioners and researchers* (2nd ed.). Hoboken, New Jersey, USA: John Wiley & Sons, Inc.
- Chin, W. W. (1998). The partial least squares approach to structural equation modeling. In G. A. Marcoulides, *Modern Methods for Business Research* (pp. 295-336). Mahwah, New Jersey, USA: Lawrence Erlbaum Associates.
- Chin, W. W., Marcolin, B. L., & Newsted, P. R. (2003). A partial least squares latent variable modeling approach for measuring interaction effects: Results from a Monte Carlo simulation study and an electronic-mail emotion/adoption study. *Information Systems Research*, 14(2), 189-217.
- Cho, I., & Orazem, P. F. (2014). Are nonprofit entrepreneurs also Jacks-of-all-trades? *Journal of Labor Economics*, 3(4), 4. doi:10.1186/2193-8997
- Ciavarella, M. A., Buchholtz, A. K., Riordan, C. M., & Gatewood, R. D. (2004). The Big Five and venture survival: Is there a linkage? *Journal of Business Venturing*, 19(4), 465-483. doi:10.1016/j.jbusvent.2003.03.001
- CIPE Pakistan. (2009). *How to start a business: A guide for women*. Karachi: Center for International Private Enterprise.
- Cohen, J. (1988). *Statistical Power Analysis for the Behavioral Sciences*. Hillsdale, NJ, USA: Lawrence Erlbaum Associates.
- Cohen, L., Manion, L., & Morrison, K. (2011). *Research Methods in Education* (7th ed.). Milton Park. Abingdon, England: Routledge.
- Conway, J., & Lance, C. (2010). What reviewers should expect from authors regarding common method bias in organizational research. *Journal of Business and Psychology*, 25, 325-334. doi:10.1007/s10869-010-9181-6
- Cooper, D. R., & Schindler, P. S. (2006). *Business Research Methods*. Chicago: McGraw-Hill Irwin.

- Corbett, A. C. (2005). Experiential learning within the process of opportunity identification and exploitation. *Entrepreneurship Theory and Practice*, 29(4), 473–491. doi:10.1111/j.1540-6520.2005.00094.x
- Cornell University, INSEAD, WIPO. (2016). *The global innovation index 2015: Effective innovation*. Fontainebleau, Ithaca, and Geneva.: World Intellectual Property Organization.
- Cornell University, INSEAD, WIPO. (2017). *The global innovation index 2016: Winning with global innovation*. Ithaca, Fontainebleau, Geneva.: World Intellectual Property Organization. Retrieved April 5, 2017, from http://www.wipo.int/edocs/pubdocs/en/wipo_pub_gii_2016.pdf
- Crant, J. M. (1996). The proactive personality scale as a predictor of entrepreneurial intentions. *Journal of Small Business Management*, 34(3), 1-42.
- Creswell, J. (2013). *Research design: Qualitative, quantitative, and mixed methods approaches*. Chicago: SAGE Publications.
- Curran, P. J., West, S. G., & Finch, J. F. (1996). The robustness of test statistics to nonnormality and specification error in confirmatory factor analysis. *Psychological Methods*, 1(1), 16–29. doi:10.1037/1082-989X.1.1.16
- Dai, L., Maksimov, V., Gilbert, B. A., & Fernhaber, S. A. (2014). Entrepreneurial orientation and international scope: The differential roles of innovativeness, proactiveness, and risk-taking. *Journal of Business Venturing*, 29(4), 511-524. doi:10.1016/j.jbusvent.2013.07.004
- Dawes, J. G. (2008). Do data characteristics change according to the number of scale points used ? An experiment using 5 point, 7 point and 10 point scales. *International Journal of Market Research*, 51(1).
- Dawson, J. (2013). Moderation in management research: What, why, when, and how. *Journal of Business and Psychology*, 29(1), 1-19. doi:10.1007/s10869-013-9308-7
- De Clercq, D., Honig, B., & Martin, B. (2012). The roles of learning orientation and passion for work in the formation of entrepreneurial intention. *International Small Business Journal*, 31(6), 652-676. doi:10.1177/0266242611432360
- Decker, R., Haltiwanger, J., Jarmin, R., & Miranda, J. (2014). The role of entrepreneurship in US job creation and economic dynamism. *The Journal of Economic Perspectives*, 28(3), 3-24.
- DeNisi, A. S. (2015). Some further thoughts on the entrepreneurial personality. *Entrepreneurship Theory and Practice*, 39(5), 997–1003. doi:10.1111/etap.12168
- Diáñez-González, J. P., & Camelo-Ordaz, C. (2015). How management team composition affects academic spin-offs' entrepreneurial orientation: The mediating role of conflict. *The Journal of Technology Transfer*, 1-28. doi:10.1007/s10961-015-9428-5

- Dijkstra, T. (1983). Some comments on maximum likelihood and partial least squares methods. *Journal of Econometrics*, 22, 67-90. doi:10.1016/0304-4076(83)90094-5
- Dodaj, A. (2012). Social desirability and self-reports: Testing a content and response-style model of socially desirable responding. *Europe's Journal of Psychology*, 8, 651-666.
- Dohse, D., & Walter, S. G. (2012). Knowledge context and entrepreneurial intentions among students. *Small Business Economics*, 39(4), 877-895. doi:10.1007/s11187-011-9324-9
- Duarte, P., & Raposo, M. (2010). A PLS model to study brand preference: An application to the mobile phone market. In V. E. Vinzi, W. W. Chin, J. Henseler, & H. Wang, *Handbook of Partial Least Squares* (pp. 449-485). Berlin: Springer.
- Duval-Couetil, N. (2013). Assessing the impact of entrepreneurship education programs: Challenges and approaches. *Journal of Small Business Management*, 51(3), 394-409. doi:10.1111/jsbm.12024
- Elliott, A. C., & Woodward, W. A. (2007). *Statistical Analysis: Quick Reference Guidebook with SPSS Examples*. Thousand Oaks, CA, USA: Sage Publications.
- England, P., & Bearak, J. (2014). The sexual double standard and gender differences in attitudes toward casual sex among U.S. university students. *Demographic Research*, 30, 1327–1338. doi:10.4054/DemRes.2014.30.46
- Engle, R. L., Dimitriadi, N., Gavidia, J. V., Schlaegel, C., Delanoe, S., Alvarado, I., . . . Wolff, B. (2010). Entrepreneurial intent: A twelve-country evaluation of Ajzen's model of planned behavior. *International Journal of Entrepreneurial Behaviour and Research*, 16(1), 35-57.
- Envick, B. R., & Langford, M. (2000). The five-factor model of personality: Assessing entrepreneurs and managers. *Academy of Entrepreneurship Journal*, 6(1), 6-17.
- Espíritu-Olmos, R., & Sastre-Castillo, M. A. (2015). Personality traits versus work values: Comparing psychological theories on entrepreneurial intention. *Journal of Business Research*, 68(7), 1595-1598. doi:10.1016/j.jbusres.2015.02.001
- Esposito Vinzi, V., Chin, W., Henseler, J., & Wang, H. (2010). *Handbook of Partial Least Squares: Concepts, Methods and Applications*. London: Springer.
- Fatoki, O. O. (2010). Graduate entrepreneurial intention in South Africa: Motivations and obstacles. *International Journal of Business and Management*, 5(9), 87-98.
- Fayolle, A., & Gailly, B. (2005). Using the theory of planned behaviour to assess entrepreneurship teaching programmes. *Center for Research in Change*,

Innovation and Strategy of Louvain School of Management, Working Paper, 5.

- Fayolle, A., & Gailly, B. (2015). The Impact of entrepreneurship education on entrepreneurial attitudes and intention: Hysteresis and persistence. *Journal of Small Business Management*, 53(1), 75-93. doi:10.1111/jsbm.12065
- Fayolle, A., Gailly, B., & Lassas-Clerc, N. (2006). Effect and counter-effect of entrepreneurship education and social context on student's intentions. *Estudios de economía aplicada*, 24(2), 509-524.
- Fellnhöfer, K. (2015). Changing entrepreneurial intention and behaviour: A digital game-based learning environment dedicated to entrepreneurship education. *Journal for International Business and Entrepreneurship Development*, 8(4), 378-404. doi:10.1504/JIBED.2015.072938
- Ferreira, J. J., Raposo, M. L., Rodrigues, R. G., Dinis, A., & do Paço, A. (2012). A model of entrepreneurial intention: An application of the psychological and behavioral approaches. *Journal of Small Business and Enterprise Development*, 19(3), 424 - 440. doi:10.1108/14626001211250144
- Field, A. (2009). *Discovering Statistics using SPSS* (3rd ed.). London: Sage Publications.
- Finance Division, Government of Pakistan. (2015). *Pakistan Economic Survey 2014-15. Economic Adviser's Wing, Islamabad*. Retrieved from http://www.finance.gov.pk/survey/chapters_15/Highlights.pdf
- Fini, R., Grimaldi, R., Marzocchi, G. L., & Sobrero, M. (2012). The determinants of corporate entrepreneurial intention within small and newly established firms. *Entrepreneurship Theory and Practice*, 36(2), 387-414. doi:10.1111/j.1540-6520.2010.00411.x
- Fink, A. (2003). *The survey handbook* (Vol. 1). Thousand Oaks, CA, USA: Sage.
- Fitzsimmons, J. R., & Douglas, E. J. (2005). Entrepreneurial attitudes and entrepreneurial intentions: A cross-cultural study of potential entrepreneurs in India, China, Thailand and Australia. Babson-Kauffman Entrepreneurial Research Conference. Wellesley, MA.
- Fornell, C., & Larcker, D. F. (1981). Evaluating Structural Equation Models with unobservable variables and measurement error. *Journal of Marketing Research*, 18, 39-50.
- Franke, N., & Lüthje, C. (2004). Entrepreneurial intentions of business students—A benchmarking study. *International Journal of Innovation and Technology Management*, 1(3), 269-288.
- Gartner, W., Bird, B., & Starr, J. (1992). Acting as if: Differentiating entrepreneurial from organizational behavior. *Entrepreneurship Theory and Practice*, 17, 13-31.

- Geisser, S. (1974). A predictive approach to the random effect model. *Biometrika*, 61, 101-107. doi:10.1093/biomet/61.1.101
- Gelderen, M. V., Brand, M., Praag, M. V., Bodewes, W., Poutsma, E., & Gils, A. V. (2008). Explaining entrepreneurial intentions by means of the theory of planned behaviour. *Career Development International*, 13 (6), 538-559. doi:10.1108/13620430810901688
- Gelderen, M. V., Kautonen, T., & Fink, M. (2015). From entrepreneurial intentions to actions: Self-control and action-related doubt, fear, and aversion. *Journal of Business Venturing*, 30(5), 655-673. doi:10.1016/j.jbusvent.2015.01.003
- Ghina, A., Simatupang, T. M., & Gustomo, A. (2014). A systematic framework for entrepreneurship education within a university context. *International Education Studies*, 7(12), 1-19.
- Giacomin, O., Janssen, F., & Shinnar, R. S. (2015). University students and their faculty: Perceptions of entrepreneurial optimism, overconfidence and entrepreneurial Intentions. *Management International*, 123-134.
- Gird, A., & Bagraim, J. J. (2008). The theory of planned behaviour as predictor of entrepreneurial intent amongst final-year university students. *South African Journal of Psychology*, 38(4), 711-724.
- Global Entrepreneurship Research Association. (2017). *Global Entrepreneurship Monitor*. GEM Consortium.
- Gotz, O., Liehr-Gobbers, K., & Krafft, M. (2010). Evaluation of Structural Equation Models using the Partial Least Squares (PLS) Approach. In V. E. Vinzi, W. W. Chin, J. Henseler, & H. Wang, *Handbook of Partial Least Squares: Concepts, Methods and Applications* (pp. 91-711). Heidelberg:: Springer.
- Gudergan, S. P., Devinney, T., Richter, N. F., & Ellis, R. S. (2012). Strategic implications for (non-equity) alliance performance. *Long Range Planning*, 45(5/6), 451-476. doi:10.1016/j.lrp.2012.09.002
- Guerrero, M., Cunningham, J. A., & Urbano, D. (2015). Economic impact of entrepreneurial universities' activities: An exploratory study of the United Kingdom. *Research Policy*, 44(3), 748-764. doi:10.1016/j.respol.2014.10.008
- Guerrero, M., Urbano, D., Cunningham, J., & Organ, D. (2014). Entrepreneurial universities in two European regions: A case study comparison. *The Journal of Technology Transfer*, 39(3), 415-434. doi:10.1007/s10961-012-9287-2
- Gupta, V. K., & Bhawe, N. M. (2007). The influence of proactive personality and stereotype threat on women's entrepreneurial intentions. *Journal of Leadership & Organizational Studies*, 13(4), 73-85.
- Gupta, V. K., Turban, D. B., Wasti, S. A., & Sikdar, A. (2009). The role of gender stereotypes in perceptions of entrepreneurs and intentions to become an entrepreneur. *Entrepreneurship Theory and Practice*, 33(2), 397-417. doi:10.1111/j.1540-6520.2009.00296.x

- Hadjimanolis, A. (2016). Perceptions of the institutional environment and entrepreneurial intentions in a small peripheral country. *International Journal of Entrepreneurship and Small Business*, 28(1), 20-35. doi:10.1504/IJESB.2016.075680
- Hair, J. F., Black, W. C., Babin, B. J., & Anderson, R. E. (2010). *Multivariate data analysis* (7 ed.). Upper Saddle River, New Jersey, USA: Prentice Hall.
- Hair, J. F., Hult, G. T., Ringle, C. M., & Sarstedt, M. (2016). *A Primer on Partial Least Squares Structural Equation Modeling (PLS-SEM)* (2 ed.). Kennesaw, GA, USA: SAGE Publications.
- Hair, J. F., Money, A. H., Samouel, P., & Page, M. (2007). *Research method for business*. West Sussex, England: John Wiley & Sons Ltd.
- Hair, J. F., Ringle, C. M., & Sarstedt, M. (2011). PLS-SEM: Indeed a silver bullet. *Journal of Marketing Theory and Practice*, 18, 139-152.
- Hair, J. F., Sarstedt, M., Ringle, C. M., & Mena, J. A. (2012). An assessment of the use of partial least squares structural equation modeling in marketing research. *Journal of the Academy of Marketing Science*, 40(3), 414-433. doi:10.1007/s11747-011-0261-6
- Hamidi, D. Y., Wennberg, K., & Berglund, H. (2008). Creativity in entrepreneurship education. *Journal of Small Business and Enterprise Development*, 15(2), 304 - 320. doi:10.1108/14626000810871691
- Haque, N. U. (2007). *Entrepreneurship in Pakistan*. PIDE Working Paper.
- Hassan, R. A., & Ghazali, M. R. (2016). Psychological traits as key factors in determining an entrepreneurial intention among students in Malaysia. *Journal of Research in Business, Economics and Management*, 6(2), 905-910.
- Haynie, J. M., Shepherd, D. A., & McMullen, J. S. (2009). An opportunity for me? The role of resources in opportunity evaluation decisions. *Journal of Management Studies*, 46(3), 337-361. doi:10.1111/j.1467-6486.2009.00824.x
- Henseler, J., & Fassott, G. (2010). Testing Moderating Effects in PLS Path Models: An Illustration of Available Procedures. In V. E. Vinzi, W. W. Chin, J. Henseler, & H. Wang, *Handbook of Partial Least Squares: Concepts, Methods and Applications* (pp. 713-735). Berlin: Springer.
- Henseler, J., & Sarstedt, M. (2013). Goodness-of-fit indices for partial least squares path modeling. *Computational Statistics*, 28, 565-580. doi:10.1007/s00180-012-0317-1
- Henseler, J., Ringle, C. M., & Sinkovics, R. R. (2009). The use of partial least squares path modeling in international marketing. In R. R. Sinkovics, & P. N. Ghauri, *New challenges to international marketing (Advances in international marketing)* (pp. 277 - 319). Manchester, UK: Emerald Group Publishing Limited.

- Higher Education Commission. (2012). Higher education commission entrepreneurship development policy. Islamabad: HEC. Retrieved from Higher Education Commission: <http://hec.gov.pk/InsideHEC/Divisions/RND/EBIC/Documents/Forms/AllItems.aspx>
- Higher Education Commission. (2014). Annual Report 2012-13. Islamabad: Higher Education Commission - Pakistan. Retrieved 9 9, 2017, from http://ibp.org.pk/pdfs/files/IMFD_program%20guide.pdf
- Hinkin, T. R. (1998). A brief tutorial on the development of measures for use in survey questionnaires. *Organizational Research Methods*, 1(1), 104-121. doi:10.1177/109442819800100106
- Hirschi, A. (2013). Career decision making, stability, and actualization of career intentions: The case of entrepreneurial intentions. *Journal of Career Assessment*. doi:10.1177/1069072712475287
- Hisrich, R. D. (2000). Can psychological approaches be used effectively: An overview. *European Journal of Work and Organizational Psychology*, 9(1), 93-96. doi:10.1080/135943200398094
- Hockerts, K. (2017). Determinants of social entrepreneurial intentions. *Entrepreneurship Theory and Practice*, 41(1), 105-130.
- Hogan, R., & Chamorro-Premuzic, T. (2015). *Personality and career success*. Washington, DC: APA.
- Holmén, M., & McKelvey, M. (2013). Restless capitalism and the economizing entrepreneur. *Economics of Innovation and New Technology*, 22(7), 684-701. doi:10.1080/10438599.2013.795780
- Hormiga, E., Hancock, C., & Valls- Pasola, J. (2013). The relationship between employee propensity to innovate and their decision to create a company. *Management Decision*, 51(5), 938-953. doi:10.1108/MD-08-2012-0591
- Hulland, J. (1999). Use of partial least squares (PLS) in strategic management research: A review of four recent studies. *Strategic Management Journal*, 195-204.
- Hunjra, A. I., Rehman, K. U., Ahmad, A., Safwan, N., & Rehman, I. U. (2010). Factor explaining the choice of finance major: Students' perception towards finance profession. *Interdisciplinary Journal of Contemporary Research in Business*, 2(5), 439-455.
- Hussain, A., & Hashim, N. B. (2015). Impact of entrepreneurial education on entrepreneurial intentions of Pakistani students. *Journal of Entrepreneurship and Business Innovation*, 2(1). doi:10.5296/jebi.v2i1.7534
- Hyder, A., Azhar, A., Javaid, A., & Rehman, M. (2011). Entrepreneurial intentions among business students in Pakistan. *Journal of Business Systems, Governance and Ethics*, 5(2), 1-9.

- Hyytinen, A., & Ilmakunnas, P. (2007). What distinguishes a serial entrepreneur? *Industrial and Corporate Change*, 16(5), 793-821. doi:10.1093/icc/dtm024
- Iakovleva, T., Kolvereid, L., & Stephan, U. (2011). Entrepreneurial intentions in developing and developed countries. *Education + Training*, 53(5), 353-370. doi:10.1108/00400911111147686
- Islamabad, C. o. (2016, 06 14). History of Islamabad. Retrieved from City of Islamabad: <http://www.visitislamabad.net/islamabad/files/file-detail.asp?var=history-of-islamabad>
- Israr, A., & Hashim, N. (2015). Research on entrepreneurial intentions: An academic literature review and classification. *Paradigms*, 9(1), 9-28.
- Jain, R., & Ali, S. W. (2013). A review of facilitators, barriers and gateways to entrepreneurship: Directions for future research. *South Asian Journal of Management*, 20(3), 122-163.
- Jakopec, A., Krecar, I. M., & Susanj, Z. (2013). Predictors of entrepreneurial intentions of students of economics. *Studia Psychologica*, 55(4), 289-297.
- Jamil, F., Ismail, K., Mahmood, N., Khan, N. U., & Siddique, M. (2015). Technology incubators and institutional development. *Jurnal Teknologi*, 77(23). doi:10.11113/jt.v77.6702
- Jaskiewicz, P., Hunter, K. H., & Luchak, A. (2015). How can proactive employees become entrepreneurs? The role of work-based regulatory foci. *Academy of Management Journal*. doi:10.5465/AMBPP.2015.14945
- Jobber, D. (1989). An examination of the effects of questionnaire factors on response to an industrial mail survey. *International Journal of Research in Marketing*, 6, 129-140. doi:10.1016/0167-8116(89)90006-2
- John, O. P., Donahue, E. M., & Kentle, R. L. (1991). *The Big Five Inventory--Versions 4a and 54*. Berkeley, CA, USA: University of California, Institute of Personality and Social Research.
- John, O. P., Naumann, L. P., & Soto, C. J. (2008). Paradigm shift to the integrative Big-Five trait taxonomy: History, measurement, and conceptual issues. In O. P. John, R. W. Robin, & L. A. Pervin, *Handbook of personality: Theory and research* (pp. 114-158). New York, NY, USA: Guilford Press.
- Judge, T. A., Higgins, C. A., Thoresen, C. J., & Barrick, M. R. (1999). The big five personality traits, general mental ability, and career success across the life span. *Personnel Psychology*, 52(3), 621-652. doi:10.1111/j.1744-6570.1999.tb00174.x
- Karimi, S., Biemans, H. J., Lans, T., Chizari, M., & Mulder, M. (2016). The impact of entrepreneurship education: A study of Iranian students' entrepreneurial intentions and opportunity identification. *Journal of Small Business Management*, 54(1), 187-209. doi:10.1111/jsbm.12137

- Karimi, S., Biemans, H. J., Mahdei, K. N., Lans, T., Chizari, M., & Mulder, M. (2015). Testing the relationship between personality characteristics, contextual factors and entrepreneurial intentions in a developing country. *International Journal of Psychology*. doi:10.1002/ijop.12209
- Katz, J. A. (1994). Modelling entrepreneurial career progressions: Concepts and considerations. *Entrepreneurship: Theory and Practice*, 19(2), 23-40.
- Kautonen, T., Gelderen, M. v., & Fink, M. (2015). Robustness of the theory of planned behavior in predicting entrepreneurial intentions and actions. *Entrepreneurship Theory and Practice*, 39(3), 655-674. doi:10.1111/etap.12056
- Kelley, D. J., Singer, S., & Herrington, M. (2011). The global report. The global entrepreneurship monitor.
- Kelley, D., Singer, S., & Herrington, M. (2016). Global entrepreneurship monitor: 2015/16 global report. Retrieved from <http://www.gemconsortium.org/report>
- Kenny, D. A., & Judd, C. M. (1984). Estimating the nonlinear and interactive effects of latent variables. *Psychological Bulletin*, 96, 201-210. doi:10.1037/0033-2909.96.1.201
- Khelifa, I., & Belkacem, L. (2015). Modeling entrepreneurial decision-making process using concepts from fuzzy set theory. *Journal of Global Entrepreneurship Research*, 5(13), 1-21. doi:10.1186/s40497-015-0031-x
- Kibler, E. (2013). Formation of entrepreneurial intentions in a regional context. *Entrepreneurship & Regional Development*, 25(3), 293-323. doi:10.1080/08985626.2012.721008
- Kline, R. B. (2011). *Principles and Practice of Structural Equation Modeling* (5th ed.). New York: The Guilford Press.
- Kolb, A. Y., & Kolb, D. A. (2005). Learning styles and learning spaces: Enhancing experiential learning in higher education. *Academy of Management Learning & Education*, 4(2), 193-212. doi:10.5465/AMLE.2005.17268566
- Kolb, A. Y., Kolb, D. A., Passarelli, A., & Sharma, G. (2014). On becoming an experiential educator: The educator role profile. *Simulation & Gaming*, 45(2), 204-234. doi:10.1177/1046878114534383
- Kolvereid, L., & Isaksen, E. (2006). New business start-up and subsequent entry into self-employment. *Journal of Business Venturing*, 21(6), 866-885.
- Kreiser, P. M., Marino, L. D., Kuratko, D. F., & Weaver, K. M. (2013). Disaggregating entrepreneurial orientation: The non-linear impact of innovativeness, proactiveness and risk-taking on SME performance. *Small Business Economics*, 40(2), 273-291. doi:10.1007/s11187-012-9460-x
- Krejcie, R., & Morgan, D. (1970). Determining sample size for research activities. *Educational and Psychological Measurement*, 30(3), 607-610.

- Krueger, N. (1993). The impact of prior entrepreneurial exposure on perceptions of new venture feasibility and desirability. *Entrepreneurship: Theory and practice*, 18(1), 5-22.
- Krueger, N. F., Reilly, M. D., & Carsrud, A. L. (2000). Competing models of entrepreneurial intentions. *Journal of Business Venturing*, 15(6), 411-432. doi:10.1016/S0883-9026(98)00033-0
- Krueger, N., & Carsrud, A. (1993). Entrepreneurial intentions: Applying the theory of planned behaviour. *Entrepreneurship and Regional Development*, 5, 315-330.
- Lackéus, M., & Middleton, K. W. (2015). Venture creation programs: Bridging entrepreneurship education and technology transfer. *Education + Training*, 57(1), 48 - 73. doi:10.1108/ET-02-2013-0013
- Lambert, D. M., & Harrington, T. C. (1990). Measuring nonresponse bias in customer service mail surveys. *Journal of Business Logistics*, 11(2), 5.
- Landstrom, H. (2005). *Pioneers in Entrepreneurship and Small Business Research*. USA: Springer. doi:10.1007/0-387-23633-3_1
- Langeheine, R., & Rost, J. (2013). *Latent Trait and Latent Class Models*. Springer Science & Business Media.
- Laspita, S., Breugst, N., Heblich, S., & Patzelt, H. (2012). Intergenerational transmission of entrepreneurial intentions. *Journal of Business Venturing*, 27(4), 414-435. doi:10.1016/j.jbusvent.2011.11.006
- Laukkanen, M. (2000). Exploring alternative approaches in high-level entrepreneurship education: Creating micromechanisms for endogenous regional growth. *Entrepreneurship & Regional Development: An International Journal*, 12(1), 25-47. doi:10.1080/089856200283072
- Lee, S. Y., Florida, R., & Acs, Z. (2004). Creativity and entrepreneurship: A regional analysis of new firm formation. *Regional Studies*, 38(8), 879-891. doi:10.1080/0034340042000280910
- Leedy, P. D., & Ormrod, J. E. (2015). *Practical Research: Planning and Design* (11 ed.). USA: Pearson.
- Leutner, F., Ahmetoglu, G., Akhtar, R., & Chamorro-Premuzic, T. (2014). The relationship between the entrepreneurial personality and the Big Five personality traits. *Personality and Individual Differences*, 63, 58-63. doi:10.1016/j.paid.2014.01.042
- Lew, Y. K., & Sinkovics, R. R. (2013). Crossing borders and industry sectors: Behavioral governance in strategic alliances and product innovation for competitive advantage. *Long Range Planning*, 46(1-2), 13-38.
- Lewis, M. V., & Kosine, N. R. (2008). What will be the impact of programs of study? A preliminary assessment based on similar previous initiatives, state

plans for implementation, and career development theory. National Research Center for Career and Technical Education.

- Liñán, F., & Chen, Y.- W. (2009). Development and Cross- Cultural application of a specific instrument to measure entrepreneurial intentions. *Entrepreneurship theory and practice*, 33(3), 593-617. doi:10.1111/j.1540-6520.2009.00318.x
- Liñán, F., & Fayolle, A. (2015). A systematic literature review on entrepreneurial intentions: Citation, thematic analyses, and research agenda. *International Entrepreneurship and Management Journal*, 11(4), 907-933. doi:10.1007/s11365-015-0356-5
- Liñán, F., & Santos, F. J. (2007). Does social capital affect entrepreneurial intentions? *International Advances in Economic Research*, 13(4), 443-453. doi:10.1007/s11294-007-9109-8
- Liñán, F., Nabi, G., & Krueger, N. (2013). British and Spanish entrepreneurial intentions: A comparative study. *Revista de Economía Mundial*, 33, 73-103.
- Liñán, F., Rodríguez-Cohard, J. C., & Rueda-Cantuche, J. M. (2011). Factors affecting entrepreneurial intention levels: a role for education. *International Entrepreneurship and Management Journal*, 7(2), 195-218. doi:10.1007/s11365-010-0154-z
- Lindell, M. K., & Whitney, D. J. (2001). Accounting for common method variance in cross-sectional research designs. *Journal of Applied Psychology*, 86, 114-121. doi:10.1037//0021-9010.86.1.114
- Lissitz, R. W., & Green, S. B. (1975). Effect of the number of scale points on reliability: A Monte Carlo approach. *Journal of Applied Psychology*, 60(1), 10-13. doi:10.1037/h0076268
- Little, R. J., & Rubin, D. B. (1987). *Statistical Analysis with Missing Data*. New York, USA: John Wiley & Sons, Inc.
- Lorz, M., Mueller, S., & Thierry Vollery, J. (2013). Entrepreneurship education: A systematic review of the methods in impact studies. *Journal of Enterprising Culture*, 21(2), 123-151. doi:10.1142/S0218495813500064
- Lowry, P. B., & Gaskin, J. (2014). Partial least squares (PLS) structural equation modeling (SEM) for building and testing behavioral causal theory: When to choose it and how to use It. *IEEE Transactions on Professional Communication*, 57(2), 123 - 146. doi:10.1109/TPC.2014.2312452
- Mahendra, A. M., Djatmika, E. T., & Hermawan, A. (2017). The effect of entrepreneurship education on entrepreneurial intention mediated by motivation and attitude among management students, state university of Malang, Indonesia. *International Education Studies*, 10(9), 61-69.
- Marcoulides, G. A., Chin, W. W., & Saunders, C. (2009). A critical look at partial least squares modeling. *MIS Quarterly*, 33(1), 171-175.

- Martin, B. C., McNally, J. J., & Kay, M. J. (2013). Examining the formation of human capital in entrepreneurship: A meta-analysis of entrepreneurship education outcomes. *Journal of Business Venturing*, 28(2), 211–224. doi:10.1016/j.jbusvent.2012.03.002
- McCrae, R. R., Kurtz, J. E., Yamagata, S., & Terracciano, A. (2011). Internal consistency, retest reliability, and their implications for personality scale validity. *Personality & Social Psychology Review*, 15(1), 28-50. doi:10.1177/1088868310366253
- McGrath, R. G. (1999). Falling forward: Real options reasoning and entrepreneurial failure. *Academy of Management Review*, 24(1), 13-30.
- McMillan, B., & Conner, M. (2003). Using the theory of planned behaviour to understand alcohol and tobacco use in students. *Psychology, Health & Medicine*, 8, 317-328. doi:10.1080/1354850031000135759
- Metcalf, R. (2013). Can Entrepreneurship Be Taught? *Texas Education Review*, 1, 119-131.
- Miralles, F., Giones, F., & Gozun, B. (2017). Does direct experience matter? Examining the consequences of current entrepreneurial behavior on entrepreneurial intention. *International Entrepreneurship and Management Journal*, 1-23.
- Miralles, F., Giones, F., & Riverola, C. (2015). Evaluating the impact of prior experience in entrepreneurial intention. *International Entrepreneurship and Management Journal*, 1-23. doi:10.1007/s11365-015-0365-4
- Mitchell, R. K., Busenitz, L., Lant, T., McDougall, P. P., Morse, E. A., & Smith, J. B. (2002). Toward a theory of entrepreneurial cognition: Rethinking the people side of entrepreneurship research. *Entrepreneurship Theory and Practice*, 27, 93–104. doi:10.1111/1540-8520.00001
- Morris, M. H., Webb, J. W., Fu, J., & Singhal, S. (2013). A competency-based perspective on entrepreneurship education: Conceptual and empirical insights. *Journal of Small Business Management*, 51(3), 352-369. doi:10.1111/jsbm.12023
- Mueller, S. (2011). Increasing entrepreneurial intention: Effective entrepreneurship course characteristics. *International Journal of Entrepreneurship and Small Business*, 13(1), 55-74. doi:10.1504/IJESB.2011.040416
- Mueller, S., & Anderson, A. R. (2014). Understanding the entrepreneurial learning process and its impact on students' personal development: A European perspective. *The International Journal of Management Education*, 12(3), 500-511. doi:10.1016/j.ijme.2014.05.003
- Muller, P., Caliandro, C., Peycheva, V., Gagliardi, D., Marzocchi, C., Ramlogan, R., & Cox, D. (2015). Annual Report on European SMEs 2014/2015. European Union.

- Mustafa, M. J., Hernandez, E., Mahon, C., & Chee, L. K. (2016). Entrepreneurial Intentions of university students in an emerging economy: The influence of university support and proactive personality on students' entrepreneurial intention. *Journal of Entrepreneurship in Emerging Economies*, 8(2), 162-179.
- Mustapha, M., & Selvaraju, M. (2015). Personal attributes, family influences, entrepreneurship education and entrepreneurship inclination among university students. *Kajian Malaysia*, 33(1), 155-172.
- Mwasalwiba, E. S. (2010). Entrepreneurship education: A review of its objectives, teaching methods, and impact indicators. *Education + Training*, 52(1), 20 - 47. doi:10.1108/00400911011017663
- Nabi, G., & Liñán, F. (2013). Considering business start-up in recession time: The role of risk perception and economic context in shaping the entrepreneurial intent. *International Journal of Entrepreneurial Behavior & Research*, 19(6), 633-655. doi:10.1108/IJEBR-10-2012-0107
- Nathalie, D. C. (2013). Assessing the impact of entrepreneurship education programs: Challenges and approaches. *Journal of Small Business Management*, 51(3), 394-409. doi:10.1111/jsbm.12024
- Neck, H. M., & Greene, P. G. (2011). Entrepreneurship education: Known worlds and new frontiers. *Journal of Small Business Management*, 49(1), 55-70. doi:10.1111/j.1540-627X.2010.00314.x
- Neck, H. M., & Greene, P. G. (2012). Entrepreneurship education: Known worlds and new frontiers. *IEEE Engineering Management Review*, 40(2), 9-21. doi:10.1109/EMR.2012.6210514
- NEMIS-AEPAM. (2015). Pakistan education statistics 2013 - 14. Ministry of Federal Education & Professional Training. Islamabad: NEMIS-AEPAM.
- Nieuwenhuizen, C., & Swanepoel, E. (2015). Comparison of the entrepreneurial intent of master's business students in developing countries: South Africa and Poland. *Acta Commercii*, 15(1), 1-10. doi:10.4102/AC.v15i1.270
- Organ, D. W., & Ryan, K. (1995). A meta-analytic review of attitudinal and dispositional predictors of organizational citizenship behaviour. *Personnel Psychology*, 48, 775-802. doi:10.1111/j.1744-6570.1995.tb01781.x
- Peltier, J. W., & Scovotti, C. (2010). Enhancing entrepreneurial marketing education: The student perspective. *Journal of Small Business and Enterprise Development*, 17(4), 514-536. doi:10.1108/14626001011088705
- Peng, D. X., & Lai, F. (2012). Using partial least squares in operations management research: A practical guideline and summary of past research. *Journal of Operations Management*, 30(6), 467-480. doi:10.1016/j.jom.2012.06.002
- Pérez-Luño, A., Wiklund, J., & Cabreraa, R. V. (2011). The dual nature of innovative activity: How entrepreneurial orientation influences innovation

- generation and adoption. *Journal of Business Venturing*, 26(5), 555–571. doi:10.1016/j.jbusvent.2010.03.001
- Peterman, N. E., & Kennedy, J. (2003). Enterprise education: Influencing students' perceptions of entrepreneurship. *Entrepreneurship Theory and Practice*, 28(2), 129–144. doi:10.1046/j.1540-6520.2003.00035.x
- Peterson, R. A., & Kim, Y. (2013). On the relationship between coefficient alpha and composite reliability. *Journal of Applied Psychology*, 98, 194-198. doi:10.1037/a0030767
- Phipps, S. (2012). Contributors to an enterprising gender: Examining the influence of creativity on entrepreneurial intentions and the moderating role of political skill controlling for gender. *Academy of Entrepreneurship Journal*, 18(1), 77-90.
- Piperopoulos, P., & Dimov, D. (2015). Burst bubbles or build steam? Entrepreneurship education, entrepreneurial self- efficacy, and entrepreneurial intentions. *Journal of Small Business Management*, 53(4), 970-985. doi:10.1111/jsbm.12116
- Pittaway, L., & Cope, J. (2007). Entrepreneurship education: a systematic review of the evidence. *International Small Business Journal*, 25(5), 479-510.
- Planning Commission, Government of Pakistan. (2011). Towards New Growth Framework. Retrieved from Framework for Economic Growth, Pakistan: <http://www.pc.gov.pk/feg/>
- Podsakoff, P. M., & Organ, D. W. (1986). Self-reports in organizational research: Problems and prospects. *Journal of Management*, 12, 531-544. doi:10.1177/014920638601200408
- Podsakoff, P. M., MacKenzie, S. B., & Podsakoff, N. P. (2012). Sources of method bias in social science research and recommendations on how to control it. *Annual Review of Psychology*, 63, 539-569. doi:10.1146/annurev-psych-120710-100452
- Podsakoff, P. M., MacKenzie, S. B., Lee, J.-Y., & Podsakoff, N. P. (2003). Common method biases in behavioral research: a critical review of the literature and recommended remedies. *Journal of Applied Psychology*, 88, 879-903.
- Polin, B. A., Ehrman, C. M., & Kay, A. (2016). Understanding parental and gender impact on entrepreneurial intentions. *Journal of Small Business & Entrepreneurship*, 28(4), 267 - 283. doi:10.1080/08276331.2016.1203689
- Prabhu, V. P., McGuire, S. J., Drost, E. A., & Kwong, K. K. (2012). Proactive personality and entrepreneurial intent : Is entrepreneurial self- efficacy a mediator or moderator? *International Journal of Entrepreneurial Behavior & Research*, 18(5), 559 - 586. doi:10.1108/13552551211253937
- Premanda, P., Brodmanna, S., Almeidaa, R., Gruna, R., & Barounib, M. (2016). Entrepreneurship education and entry into self-employment among university

graduates. *World Development*, 77, 311–327.
doi:10.1016/j.worlddev.2015.08.028

- Qureshi, M. S., & Mian, S. (2012). *Global Entrepreneurship Monitor, Pakistan Report*. IBA, Center for Entrepreneurial Development, Karachi.
- Qureshi, M. S., Saeed, S., & Wasti, S. W. (2016). The impact of various entrepreneurial interventions during the business plan competition on the entrepreneur identity aspirations of participants. *Journal of Global Entrepreneurship Research*, 6(9). doi:10.1186/s40497-016-0052-0
- Rafiq, M., Ilyas, M., & Rehman, C. A. (2015). Linkage between entrepreneurial education and intention. *Pakistan Business Review*, 17(2), 366-384.
- Rana, S. (2015, June). *Economy Rankings*. Retrieved from World Bank Group: <http://www.doingbusiness.org/rankings>
- Randall, D. M., & Fernandes, M. F. (1991). The social desirability response bias in ethics research. *Journal of Business Ethics*, 10, 805-817.
- Rasmussen, E. A., & Sørheim, R. (2006). Action-based entrepreneurship education. *Technovation*, 26(2), 185-194. doi:10.1016/j.technovation.2005.06.012
- Rauch, A., & Frese, M. (2007). Let's put the person back into entrepreneurship research: A meta-analysis on the relationship between business owners' personality traits, business creation, and success. *European Journal of Work and Organizational Psychology*, 16(4), 353-385. doi:10.1080/13594320701595438
- Raymond, M. R. (1986). Missing data in evaluation research. *Evaluation & the Health Professions*, 9, 395-420. doi:10.1177/016327878600900401
- Raza, S. I. (2012, 08 07). Islamabad's population touches two-million mark. Islamabad's population touches two-million mark. Islamabad, Pakistan. Retrieved 06 14, 2016, from <http://www.dawn.com/news/740350/islamabads-population-touches-two-million-mark>
- Reinartz, W. J., Haenlein, M., & Henseler, J. (2009). An empirical comparison of the efficacy of covariance-based and variance-based SEM. *International Journal of Research in Marketing*, 26, 332-344. doi:10.1016/j.ijresmar.2009.08.001
- Renko, M., Kroeck, K., & Bullough, A. (2012). Expectancy theory and nascent entrepreneurship. *Small Business Economics*, 39(3), 667-684. doi:10.1007/s11187-011-9354-3
- Renko, M., Tarabishy, A. E., Carsrud, A. L., & Brännback, M. (2015). Understanding and measuring entrepreneurial leadership style. *Journal of Small Business Management*, 53(1), 54-74. doi:10.1111/jsbm.12086
- Rigdon, E. E., Schumacker, R. E., & Wothke, W. (1998). A comparative review of. In R. E. Schumacker, & G. A. Marcoulides, *Interaction and nonlinear effects*

in structural equation modeling (pp. 1-16). Mahwah,, NJ, USA: Lawrence Erlbaum.

- Ringle, C. M., Sarstedt, M., & Straub, D. (2012). A critical look at the use of PLS-SEM. *MIS Quarterly*.
- Rodrigues, N., & Rebelo, T. (2013). Incremental validity of proactive personality over the Big Five for predicting job performance of software engineers in an innovative context. *Revista de Psicología del Trabajo y de las Organizaciones*, 29(1), 21-27. doi:10.5093/tr2013a4
- Rodrigues, R. G., Dinis, A., Paço, A. d., Ferreira, J., & Raposo, M. (2012). The effect of an entrepreneurial training programme on entrepreneurial traits and intention of secondary students. In T. Burger-Helmchen, *Entrepreneurship - Born, made and educated* (pp. 77-92). Rijeka, Croatia: InTech.
- Rost, J. (1988). Rating scale analysis with latent class models. *Psychometrika*, 53(3), 327-348.
- Saadin, M. N., & Daskin, M. (2015). Perceived desirability, feasibility, and social norms as antecedents on hospitality students' entrepreneurial intention in Malaysia: does gender make a difference? *International Journal of Entrepreneurship and Small Business*, 25(4), 456-474. doi:10.1504/IJESB.2015.070218
- Saeed, R., Nayyab, H. H., Rashied, H., Lodhi, R. N., Musawar, S., & Iqbal, A. (2013). Who is the most potential entrepreneur? A case of Pakistan. *Middle-East Journal of Scientific Research*, 17(9), 1307-1315. doi:10.5829/idosi.mejsr.2013.17.09.12296
- Saeed, S., Yousafzai, S. Y., Yani-De-Soriano, M., & Muffatto, M. (2015). The role of perceived university support in the formation of students' entrepreneurial intention. *Journal of Small Business Management*, 53(4), 1127–1145. doi:10.1111/jsbm.12090
- Saha, M. (2014). Entrepreneurial motivation and self - employment intention: An opportunity to conquer recession through management education. *Recession to Recovery: Opportunities, Challenges and Strategies for Sustainable Growth*, 28-46.
- Sahut, J.-M., & Peris-Ortiz, M. (2013). Small business, innovation, and entrepreneurship. *Small Business Economics*, 42(4), 663-668. doi:10.1007/s11187-013-9521-9
- Salem, M. I. (2014). Building an entrepreneurial economy: Evidence from developing countries. *International Business & Economics Research Journal*, 13(3).
- Samo, A. H., & Mahar, A. H. (2016). GUESSSS: Report for Pakistan. Sukkur: Sukkur Institute of Business Administration.

- Sánchez, J. C. (2011). University training for entrepreneurial competencies: Its impact on intention of venture creation. *International Entrepreneurship and Management Journal*, 7(2), 239-254. doi:10.1007/s11365-010-0156-x
- Sánchez, J. C. (2013). The impact of an entrepreneurship education program on entrepreneurial competencies and intention. *Journal of Small Business Management*, 51(3), 447-465. doi:10.1111/jsbm.12025
- Sarstedt, M., Ringle, C. M., Smith, D., Reams, R., & Hair, J. F. (2014). Partial least squares structural equation modeling (PLS-SEM): A useful tool for family business researchers. *Journal of Family Business Strategy*, 51, 105–115. doi:10.1016/j.jfbs.2014.01.002
- Sattler, H., Völckner, F., Riediger, C., & Ringle, C. M. (2010). The impact of brand extension success factors on brand extension price premium. *International Journal of Research in Marketing*, 27(4), 319-328.
- Sautet, F. (2013). Local and systemic entrepreneurship: Solving the puzzle of entrepreneurship and economic development. *Entrepreneurship Theory and Practice*, 37(2), 387-402. doi:10.1111/j.1540-6520.2011.00469.x
- Schumpeter, J. A. (1934). *The theory of economic development: An inquiry into profits, capital, credit, interest, and the business cycle*. Transaction publishers.
- Scuotto, V., & Morellato, M. (2013). Entrepreneurial knowledge and digital competence: Keys for a success of student entrepreneurship. *Journal of the Knowledge Economy*, 4(3), 293-303. doi:10.1007/s13132-013-0155-6
- Segal, G., Borgia, D., & Schoenfeld, J. (2005). The motivation to become an entrepreneur. *International Journal of Entrepreneurial Behavior & Research*, 11(1), 42 - 57. doi:10.1108/13552550510580834
- Sekaran, U. (2007). *Research Methods for Business: A Skill Building Approach*. New York: John Wiley & Sons, Inc.
- Sekaran, U., & Bougie, R. (2010). *Research methods for business: A skill-building approach* (6 ed.). Singapore: John Wiley & Sons Inc.
- Selya, A. S., Rose, J. S., Dierker, L. C., Hedeker, D., & Mermelstein, R. J. (2012). A practical guide to calculating Cohen's f^2 , a measure of local effect size from PROC MIXED. *Frontiers in Psychology*, 3, 111-116. doi:10.3389/fpsyg.2012.00111
- Semrau, T., Ambos, T., & Kraus, S. (2016). Entrepreneurial orientation and SME performance across societal cultures: An international study. *Journal of Business Research*, 69(5), 1928-1932. doi:10.1016/j.jbusres.2015.10.082
- Sesen, H. (2013). Personality or environment? A comprehensive study on the entrepreneurial intentions of university students. *Education + Training*, 55(7), 624-640. doi:10.1108/ET-05-2012-0059

- Shane, S., & Venkataraman, S. (2000). The promise of entrepreneurship as a field of research. *Academy of Management Review*, 25(1), 217-226. doi:10.5465/AMR.2000.2791611
- Shapero, A., & Sokol, L. (1982). The social dimensions of entrepreneurship. *Encyclopedia of entrepreneurship*, 72-90.
- Shepherd, D. A., & DeTienne, D. R. (2005). Prior knowledge, potential financial reward, and opportunity identification. *Entrepreneurship Theory and Practice*, 29(1), 91–112. doi:10.1111/j.1540-6520.2005.00071.x
- Sieger, P., Fueglistaller, U., & Zellweger, T. (2016). *Student Entrepreneurship 2016: Insight from 50 countries*. St.Gallen/Bern: KMU-HSG/IMU.
- Silva, M. S., Smith, W. T., & Bammer, G. (2002). Telephone reminders are a cost effective way to improve responses in postal health surveys. *Journal of epidemiology and community health*, 56(2), 115-118. doi:10.1136/jech.56.2.115
- Sivarajah, K., & Achchuthan, S. (2013). Entrepreneurial intention among undergraduates: Review of literature. *European Journal of Business and Management*, 5(5), 172-186.
- Smith, R. M., Sardeshmukh, S. R., & Combs, G. M. (2016). Understanding gender, creativity, and entrepreneurial intentions. *Education + Training*, 58(3), 263 - 282. doi:10.1108/ET-06-2015-0044
- Solesvik, M., Westhead, P., & Matlay, H. (2014). Cultural factors and entrepreneurial intention. *Education + Training*, 56(8/9), 680-696. doi:10.1108/ET-07-2014-0075
- Souitaris, V., Zerbinati, S., & Al-Laham, A. (2007). Do entrepreneurship programmes raise entrepreneurial intention of science and engineering students? The effect of learning, inspiration and resources. *Journal of Business Venturing*, 22(4), 566-591. doi:10.1016/j.jbusvent.2006.05.002
- Spector, P. E. (2006). Method variance in organizational research: Truth or urban legend? *Organizational Research Methods*, 9, 221-232. doi:10.1177/1094428105284955
- Spiteri, S., & Maringe, F. (2014). EU entrepreneurial learning: perspectives of university students. *Journal of Enterprising Communities*, 8(1), 51 - 70. doi:10.1108/JEC-07-2013-0023
- Stone, M. (1974). Cross-validatory choice and assessment of statistical predictions. *Journal of the Royal Statistical Society. Series B (Methodological)*, 36, 111-147. doi:10.2307/2984809
- Suárez-Álvarez, J., & Pedrosa, I. (2016). The assessment of entrepreneurial personality: The current situation and future directions. *Papeles del Psicólogo*, 37(1), 62-68.

- Sun, W., Chou, C.-P., Stacy, A., Ma, H., Unger, J., & Gallaher, P. (2007). SAS and SPSS macros to calculate standardized Cronbach's alpha using the upper bound of the phi coefficient for dichotomous items. *Behavior Research Methods*, 39(1), 71-81. doi:10.3758/bf03192845
- Sušanj, Z., Jakopec, A., & Krečar, I. M. (2015). Verifying the model of predicting entrepreneurial intention among students of business and non-business orientation. *Management: Journal of Contemporary Management*, 20(2), 49-69.
- Tabachnick, B. G., & Fidell, L. S. (2012). *Using multivariate statistics* (6 ed.). Northridge, CA: Pearson.
- Tanveer, M. A., Shafique, O., Akbar, S., & Rizvi, S. (2013). Intentions of business graduate and undergraduate to become entrepreneur: A study from Pakistan. *Journal of Basic and Applied Science*, 3(1), 718-725.
- The World Bank. (2015). Youth literacy rate, population 15-24 years, both sexes (%). Retrieved from The World Bank: <http://data.worldbank.org/indicator/SE.ADT.1524.LT.ZS?page=1>
- Thorsteinsson, G., & Page, T. (2015). How Do Practising Teachers Understand Creativity? *International Journal of Teaching and Case Studies*, 6(1), 61-77.
- Traina, S. B., MacLean, C. H., Park, G. S., & Kahn, K. L. (2005). Telephone reminder calls increased response rates to mailed study consent forms. *Journal of Clinical Epidemiology*, 58, 743-746. doi:10.1016/j.jclinepi.2005.02.001
- Truxillo, D. M., McCune, E. A., Bertolino, M., & Fraccaroli, F. (2012). Perceptions of older versus younger workers in terms of big five facets, proactive personality, cognitive ability, and job performance. *Journal of Applied Social Psychology*, 42(11), 2607-2639. doi:10.1111/j.1559-1816.2012.00954.x
- Ucbasaran, D., Westhead, P., & Wright, M. (2008). Opportunity identification and pursuit: Does an entrepreneur's human capital matter? *Small Business Economics*, 30(2), 153-173. doi:10.1007/s11187-006-9020-3
- Ulrich, T. A. (2005). The relationship of business major to pedagogical strategies. *Journal of Education for Business*, 80(5), 269-274. doi:10.3200/JOEB.80.5.269-274
- Ulrich, T. A., & Cole, G. S. (1987). Toward more effective training of future entrepreneurs. *Journal of Small Business Management*, 25(4), 32-39.
- Ulrich, T. A., & Holman, W. R. (2000). Student ratings of pedagogical strategies. *Allied Academies International Conference. Academy of Educational Leadership. Proceedings*, 5, pp. 1-5.
- Unger, J. M., Rauch, A., Frese, M., & Rosenbusch, N. (2011). Human capital and entrepreneurial success: A meta-analytical review. *Journal of Business Venturing*, 26(3), 341-358. doi:10.1016/j.jbusvent.2009.09.004

- United Nations. (2016). *World Economic Situation and Prospects 2015*. New York.
- Valliere, D. (2013). Entrepreneurial alertness and paying attention. *Journal of Enterprising Culture*, 21(1), 63-83. doi:10.1142/S0218495813500015
- Volery, T., Müller, S., Oser, F., Naepflin, C., & Rey, N.-d. (2013). The impact of entrepreneurship education on human capital at upper-secondary level. *Journal of Small Business Management*, 51(3), 429-. doi:10.1111/jsbm.12020
- Volkman, C., Wilson, K. E., Mariotti, S., Rabuzzi, D., Vyakarnam, S., & Sepulveda, A. (2009). *Educating the next wave of entrepreneurs*. Geneva: World Economic Forum.
- Wagner, G. A., Stempliuk, V. D., Zilberman, M. L., Barroso, L. P., & Andrade, A. G. (2007). Alcohol and drug use among university students: Gender differences. *Revista Brasileira de Psiquiatria*, 29(2), 123-129.
- Walker, T. (2016). Entrepreneurial Wisdom. In *CSR, Sustainability, Ethics & Governance* (pp. 165-179). Springer International Publishing. doi:10.1007/978-3-319-28287-9_13
- Walter, S. G., & Dohse, D. (2012). Why mode and regional context matter for entrepreneurship education. *Entrepreneurship & Regional Development: An International Journal*, 24(9), 807-835. doi:10.1080/08985626.2012.721009
- Wang, J.-H., Chang, C.-C., Yao, S.-N., & Liang, C. (2015). The contribution of self-efficacy to the relationship between personality traits and entrepreneurial intention. *Higher Education*, 1-16. doi:10.1007/s10734-015-9946-y
- Wen-Long, C., Liu, W. G., & Chiang, S.-M. (2014). A study of the relationship between entrepreneurship courses and opportunity identification: An empirical survey. *Asia Pacific Management Review*, 19(1).
- Wetzels, M., Odekerken-Schroder, G., & Van Oppen, C. (2009). Using PLS path modeling for assessing hierarchical construct models: Guidelines and empirical illustration. *MIS Quarterly*, 33, 177-195.
- Wilden, R., Gudergan, S. P., Nielsen, B. B., & Lings, I. (2013). Dynamic capabilities and performance: Strategy, structure and environment. *Long Range Planning*, 46(1-2), 72-96. doi:10.1016/j.lrp.2012.12.001
- Wilson, B., Callaghan, W., Ringle, C., & Henseler, J. (2007). Exploring causal path directionality for a marketing model: Using Cohen's path method. Paper presented at the PLS'07 international symposium on PLS and related methods—Causalities explored by indirect observation, (pp. 57-61). Oslo.
- Winkler, C., Troudt, E. E., Schweikert, C., & Schulman, S. A. (2015). Infusing business and entrepreneurship education into a computer science curriculum - A case study of the STEM virtual enterprise. *Journal of Business and Entrepreneurship*, 27(1), 1-21.

- World Bank. (2016). *Doing Business 2016: Measuring regulatory quality and efficiency*. Washington. doi:10.1596/978-1-4648-0667-4
- World Bank. (2017). *Doing Business*. Washington DC: World Bank Group. Retrieved April 5, 2017, from <http://www.doingbusiness.org/~media/WBG/DoingBusiness/Documents/Annual-Reports/English/DB17-Report.pdf>
- Xiang, H., & Lei, J. (2013). Student entrepreneurial intentions in Chinese universities based on the ISO model. *Journal of Tsinghua University (Science and Technology)*, 1, 23.
- Xiao, L., & Fan, M. (2014). Does social network always promote entrepreneurial intentions? An empirical study in China. *Neural Computing and Applications*, 24(1), 21-26. doi:10.1007/s00521-013-1492-x
- Yan, J. (2010). The impact of entrepreneurial personality traits on perception of new venture opportunity. *New England Journal of Entrepreneurship*, 13(2), 21-35.
- Zampetakis, L. A., & Moustakis, V. (2006). Linking creativity with entrepreneurial intentions: A structural approach. *The International Entrepreneurship and Management Journal*, 2(3), 413-428. doi:10.1007/s11365-006-0006-z
- Zampetakis, L. A., Gotsi, M., Andriopoulos, C., & Moustakis, V. (2011). Creativity and entrepreneurial intention in young people: Empirical insights from business school students. *The International Journal of Entrepreneurship and Innovation*, 12(3), 189-199. doi:10.5367/ijei.2011.0037
- Zampetakis, L. A., Kafetsios, K., Bouranta, N., Dewett, T., & Moustakis, V. S. (2009). On the relationship between emotional intelligence and entrepreneurial attitudes and intentions. *International Journal of Entrepreneurial Behavior & Research*, 15(6), 595-618. doi:10.1108/13552550910995452
- Zellweger, T., & Sieger, P. (2012). Entrepreneurial orientation in long-lived family firms. *Small Business Economics*, 38(1), 67-84. doi:10.1007/s11187-010-9267-6
- Zeng, F. Q., Zheng, M. Q., & Lee, D. (2015). An empirical study on the influencing factors of university students' entrepreneurial intention - A research based on the chinese nascent social entrepreneur. *Journal of Asia Entrepreneurship and Sustainability*, 11(1), 89-126.
- Zhang, Y., Duysters, G., & Cloudt, M. (2014). The role of entrepreneurship education as a predictor of university students' entrepreneurial intention. *International Entrepreneurship and Management Journal*, 10(3), 623-641. doi:10.1007/s11365-012-0246-z
- Zhao, H., & Seibert, S. E. (2006). The big five personality dimensions and entrepreneurial status: A meta-analytical review. *Journal of Applied Psychology*, 91(2), 259-271. doi:10.1037/0021-9010.91.2.259

Zhao, H., Seibert, S. E., & Lumpkin, G. T. (2010). The relationship of personality to entrepreneurial intentions and performance: a meta-analytic review. *Journal of management*, 36(2), 381-404. doi:10.1177/0149206309335187

Zikmund, W., Babin, B., Carr, J., & Griffin, M. (2012). *Business Research Methods*. Masson: Cengage Learning.



APPENDICES

Appendix A

Questionnaire

Dear Respondent,

I am conducting research on “Impact of Personality on Entrepreneurial Intentions: The Moderating Role of Teaching Methodology”, through this survey questionnaire as part of my PhD Research. There is no right or wrong answer to any question in this survey questionnaire. The data collected through this survey will be used for the research purpose only. Therefore your objective opinion in answering these questions will be highly valuable. All data will be kept confidential.

The directions for each section are given at the start of each individual section for your continuous assistance.

Your participation is crucial for this research. We sincerely appreciate your time and efforts for contribution in this survey

Aqeel Israr
PhD Scholar (95933),
(Training)
UUM Malaysia
Senior Lecturer,
Bahria University, Islamabad Campus

Dr. Norashidah Hashim
Deputy Director
CEDI, UUM Malaysia



UUM
Universiti Utara Malaysia

Section 1: Entrepreneurial Intentions

This section deals with the Intention of becoming an Entrepreneurs and initiating a new venture. You are required to assess your own self in this respect. Your response in this section ranges from (1) denoting “completely disagree” to (5) denoting “completely agree”. Kindly mark your selection with a ✓

| S. No | | (1) | (2) | (3) | (4) | (5) |
|-------|--|--------------------------|--------------------------|--------------------------|--------------------------|--------------------------|
| 1 | I am ready to do anything to be an entrepreneur. | <input type="checkbox"/> | <input type="checkbox"/> | <input type="checkbox"/> | <input type="checkbox"/> | <input type="checkbox"/> |
| 2 | My professional goal is to become an entrepreneur. | <input type="checkbox"/> | <input type="checkbox"/> | <input type="checkbox"/> | <input type="checkbox"/> | <input type="checkbox"/> |
| 3 | I will make every effort to start and run my own firm. | <input type="checkbox"/> | <input type="checkbox"/> | <input type="checkbox"/> | <input type="checkbox"/> | <input type="checkbox"/> |
| 4 | I am determined to create a firm in the future. | <input type="checkbox"/> | <input type="checkbox"/> | <input type="checkbox"/> | <input type="checkbox"/> | <input type="checkbox"/> |
| 5 | I have very serious thought of starting a firm. | <input type="checkbox"/> | <input type="checkbox"/> | <input type="checkbox"/> | <input type="checkbox"/> | <input type="checkbox"/> |
| 6 | I have a firm intention to start a firm someday. | <input type="checkbox"/> | <input type="checkbox"/> | <input type="checkbox"/> | <input type="checkbox"/> | <input type="checkbox"/> |

Section 2: Personality

For this section, you are required to assess your own self as per the statements provided. Your response in this section ranges from (1) denoting “completely disagree” to (5) denoting “completely agree”. Kindly mark your selection with a “✓”.

| Sr. No. | Statement | (1) | (2) | (3) | (4) | (5) |
|---------|--|--------------------------|--------------------------|--------------------------|--------------------------|--------------------------|
| 7 | Creating something that is useful to people and a profitable for myself is my idea of perfection | <input type="checkbox"/> | <input type="checkbox"/> | <input type="checkbox"/> | <input type="checkbox"/> | <input type="checkbox"/> |
| 8* | Even when I spot a profitable opportunity I rarely act on it | <input type="checkbox"/> | <input type="checkbox"/> | <input type="checkbox"/> | <input type="checkbox"/> | <input type="checkbox"/> |
| 9 | I always dreamed of creating something (e.g., a product or service) that has an objectively recognised value | <input type="checkbox"/> | <input type="checkbox"/> | <input type="checkbox"/> | <input type="checkbox"/> | <input type="checkbox"/> |
| 10 | I always know when there is a “gap in the market” for a new product or service | <input type="checkbox"/> | <input type="checkbox"/> | <input type="checkbox"/> | <input type="checkbox"/> | <input type="checkbox"/> |
| 11 | I always strive to make things better for myself and/or others | <input type="checkbox"/> | <input type="checkbox"/> | <input type="checkbox"/> | <input type="checkbox"/> | <input type="checkbox"/> |
| 12 | I am highly future oriented | <input type="checkbox"/> | <input type="checkbox"/> | <input type="checkbox"/> | <input type="checkbox"/> | <input type="checkbox"/> |
| 13 | I am quick to spot profitable opportunities | <input type="checkbox"/> | <input type="checkbox"/> | <input type="checkbox"/> | <input type="checkbox"/> | <input type="checkbox"/> |
| 14 | I am very creative | <input type="checkbox"/> | <input type="checkbox"/> | <input type="checkbox"/> | <input type="checkbox"/> | <input type="checkbox"/> |
| 15 | I am very forward-looking | <input type="checkbox"/> | <input type="checkbox"/> | <input type="checkbox"/> | <input type="checkbox"/> | <input type="checkbox"/> |
| 16 | I am very good at coming up with novel solutions to problems | <input type="checkbox"/> | <input type="checkbox"/> | <input type="checkbox"/> | <input type="checkbox"/> | <input type="checkbox"/> |
| 17* | I don't always grab the opportunities that I have | <input type="checkbox"/> | <input type="checkbox"/> | <input type="checkbox"/> | <input type="checkbox"/> | <input type="checkbox"/> |
| 18 | I have a strong desire for progress | <input type="checkbox"/> | <input type="checkbox"/> | <input type="checkbox"/> | <input type="checkbox"/> | <input type="checkbox"/> |
| 19 | I have great business ideas before others do | <input type="checkbox"/> | <input type="checkbox"/> | <input type="checkbox"/> | <input type="checkbox"/> | <input type="checkbox"/> |
| 20* | I like following accepted procedures at work or school | <input type="checkbox"/> | <input type="checkbox"/> | <input type="checkbox"/> | <input type="checkbox"/> | <input type="checkbox"/> |
| 21* | I often fail to act on valuable opportunities | <input type="checkbox"/> | <input type="checkbox"/> | <input type="checkbox"/> | <input type="checkbox"/> | <input type="checkbox"/> |
| 22* | I rarely act on profitable opportunities, even when believe they can benefit me or others | <input type="checkbox"/> | <input type="checkbox"/> | <input type="checkbox"/> | <input type="checkbox"/> | <input type="checkbox"/> |
| 23* | I rarely think outside the box | <input type="checkbox"/> | <input type="checkbox"/> | <input type="checkbox"/> | <input type="checkbox"/> | <input type="checkbox"/> |
| 24 | I see myself as highly innovative | <input type="checkbox"/> | <input type="checkbox"/> | <input type="checkbox"/> | <input type="checkbox"/> | <input type="checkbox"/> |

- 25 I see profitable opportunities where others do not
- 26 I try to take advantage of every profitable opportunity I see
- 27 I usually have the innovative ideas in group tasks or projects
- 28 I'm generally the first to see a commercial opportunity when it appears
- 29* I'm not particularly interested in creating something of commercial or social value
- 30 I'm very alert to opportunities to create commercial or social value
- 31 If I see an opportunity I jump on it
- 32 If there is a profitable opportunity, I will see it
- 33* It is not that I don't see profitable opportunities, I just don't have the motivation to do anything about them
- 34 My aim in life is finding new ways to make economic or social progress
- 35 People tend to think of me as highly innovative
- 36* There is little point in trying to find new ways of doing something if old ways work

Section 3: Teaching Methodology

For this section, grade the effectiveness of a teaching methodology / activity used by the teacher during your course on Entrepreneurship. Your response in this section ranges from (1) denoting "Very ineffective" to (5) denoting "very effective". If any certain activity was not conducted / used, kindly select "N/A", denoting "Not Applicable". Kindly mark your selection with a ✓

| S. No | | N/A | (1) | (2) | (3) | (4) | (5) |
|-------|------------------------|--------------------------|--------------------------|--------------------------|--------------------------|--------------------------|--------------------------|
| 37 | Internships | <input type="checkbox"/> | <input type="checkbox"/> | <input type="checkbox"/> | <input type="checkbox"/> | <input type="checkbox"/> | <input type="checkbox"/> |
| 38 | Case Analysis | <input type="checkbox"/> | <input type="checkbox"/> | <input type="checkbox"/> | <input type="checkbox"/> | <input type="checkbox"/> | <input type="checkbox"/> |
| 39 | Case Studies | <input type="checkbox"/> | <input type="checkbox"/> | <input type="checkbox"/> | <input type="checkbox"/> | <input type="checkbox"/> | <input type="checkbox"/> |
| 40 | Management Simulations | <input type="checkbox"/> | <input type="checkbox"/> | <input type="checkbox"/> | <input type="checkbox"/> | <input type="checkbox"/> | <input type="checkbox"/> |
| 41 | Experiential Exercises | <input type="checkbox"/> | <input type="checkbox"/> | <input type="checkbox"/> | <input type="checkbox"/> | <input type="checkbox"/> | <input type="checkbox"/> |
| 42 | Role Playing | <input type="checkbox"/> | <input type="checkbox"/> | <input type="checkbox"/> | <input type="checkbox"/> | <input type="checkbox"/> | <input type="checkbox"/> |
| 43 | Videos | <input type="checkbox"/> | <input type="checkbox"/> | <input type="checkbox"/> | <input type="checkbox"/> | <input type="checkbox"/> | <input type="checkbox"/> |

Section 4: Demographic Information

- 44 Name of University _____
- 45 Have you taken any Entrepreneurship course during your study at the university?
 Yes No
- 46 What is your program of study (e.g. BBA, MBA etc.)?

- 47 What is your area of specialisation (e.g. Marketing, Finance, HR etc.)?

- 48 Gender
 Male Female
- 49 Your age in years. _____
- 50 What is your hometown? _____
- 51 Do you have any work experience?
 Yes No
- 52 Have your parents ever started a business?
 Yes No
- 53 Have your friends ever started a business?
 Yes No
- 54 Does your teacher of Entrepreneurship have any prior experience of starting a business?
 Yes No
- 55 Does your teacher of Entrepreneurship course have any corporate experience?
 Yes No

Section 5: Contact Information

Any information provided will be considered as strictly confidential and will only be used for the aims of this research.

Name: _____
Mobile: _____
Email: _____

Appendix B

Permission to use Questionnaire

Re: Entrepreneurial Intention Questionnaire

Francisco Liñán <fLiñán@us.es>

Tue, Dec 22, 2015 at 8:54 PM

Reply-To: Francisco Liñán <fLiñán@us.es>

To: aqeelisrar@gmail.com

Dear Aqeel Israr,

Thank you for your interest in our work. Please find attached 3 versions of the EIQ and the papers in which they were used. The first versions (EIQ2 and EIQ3) are designed as aggregated scales. The papers in which they were used are Liñán & Chen (2009) and Liñán, Urbano & Guerrero (2011), respectively. More recently, within the VIE Project (<http://institucional.us.es/vie>), we have developed a newer and more refined questionnaire. In it, Personal Attitude and Subjective Norm has been measured by pondering personal beliefs with the relevance attached to each belief.

I attached this newer version of the questionnaire (Original in Spanish, the translation made by ourselves) and one of the papers in which it was used (Liñán, Moriano & Jaén, 2016).

You can use them as you feel is best, but do please acknowledge your source.

Best regards,

--

Prof. Francisco Liñán

Universidad de Sevilla // University of Seville

Av. Ramon y Cajal, 1. E41018 - Sevilla (Spain)

T: [+34.954554487](tel:+34954554487).

F: [+34.954551636](tel:+34954551636).

M: [+34.654982383](tel:+34654982383). Skype:

franciscoLiñánalcalde

Web: https://www.researchgate.net/profile/Francisco_Liñán ; <https://es.linkedin.com/in/franciscoLiñán>

<http://www.masteremprededoresus.com>

Ahmetoglu, Gorkan <g.ahmetoglu@ucl.ac.uk> Tue, May 3, 2016 at 5:27 AM
To: Aqeel Israr <aqeelisrar@gmail.com>

Hi Aqeel,

Very happy to hear about your interest in META.

Please find attached the questionnaire.

All the best,

Gorkan

Dr Gorkan Ahmetoglu
Lecturer of Business Psychology
University College London
www.metaprofiling.com
Mob: [++ 44 \(0\) 788 648 3637](tel:+44207886483637)
Office: [++ 44 \(0\) 207 679 5401](tel:+442076795401)



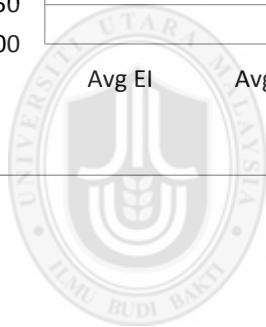
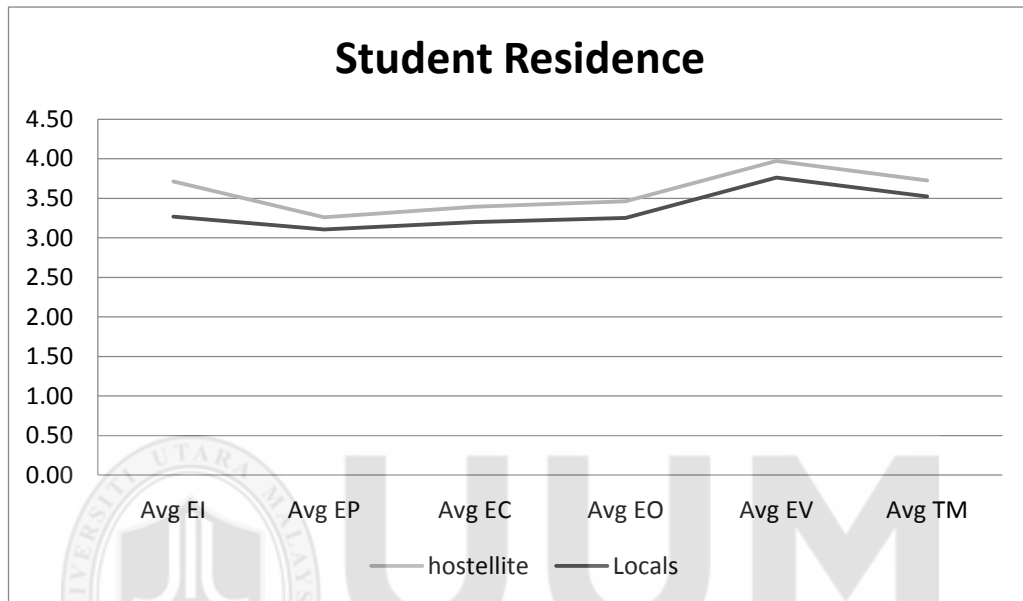
UUM
Universiti Utara Malaysia

Appendix C

Additional Data Analysis Results

Home Town

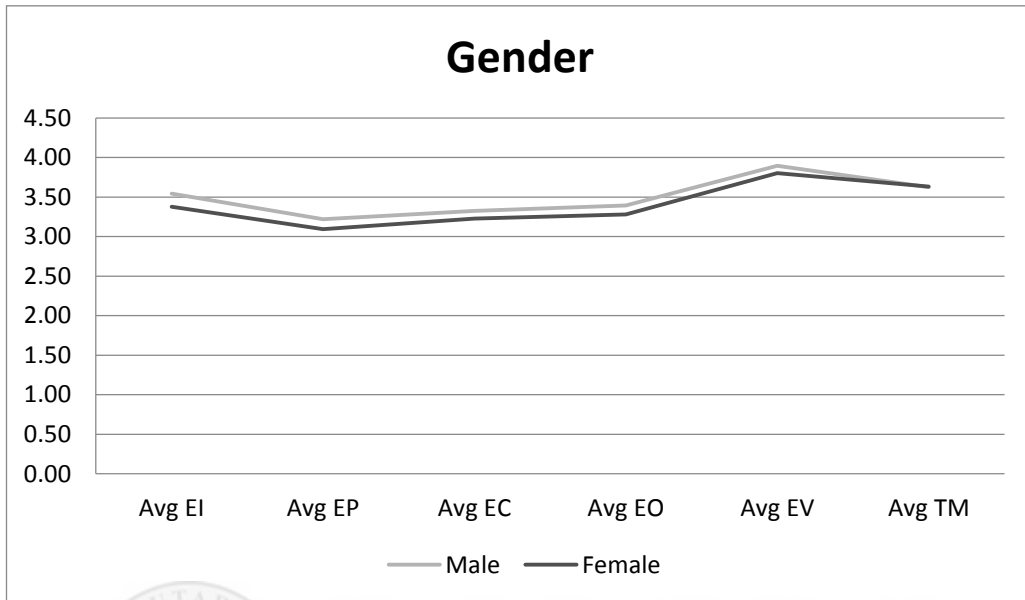
| | EI | EP | EC | EO | EV | TM |
|------------|------|------|------|------|------|------|
| Hostellite | 3.71 | 3.26 | 3.39 | 3.46 | 3.97 | 3.73 |
| Locals | 3.27 | 3.10 | 3.20 | 3.25 | 3.76 | 3.52 |



UUM
Universiti Utara Malaysia

Gender

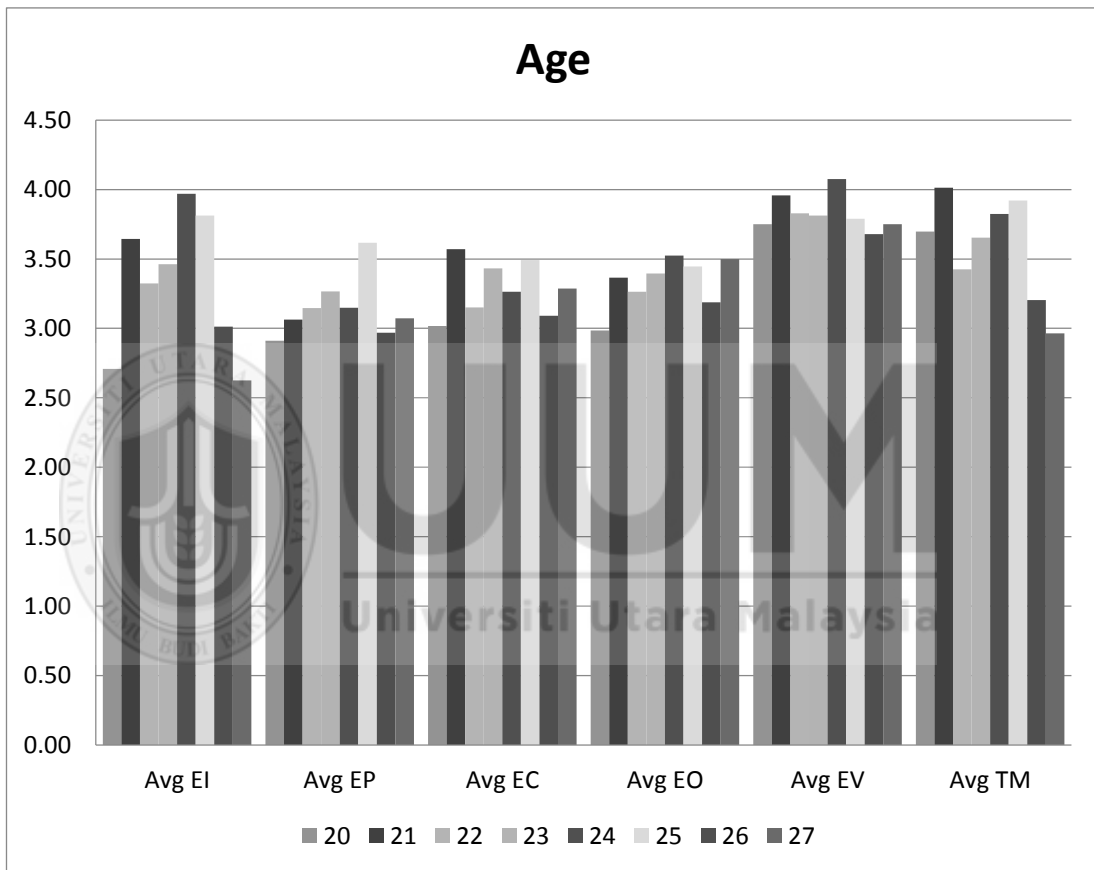
| Gender | EI | EP | EC | EO | EV | TM |
|--------|------|------|------|------|------|------|
| Male | 3.54 | 3.22 | 3.33 | 3.39 | 3.89 | 3.62 |
| Female | 3.38 | 3.09 | 3.23 | 3.28 | 3.80 | 3.63 |



UUM
Universiti Utara Malaysia

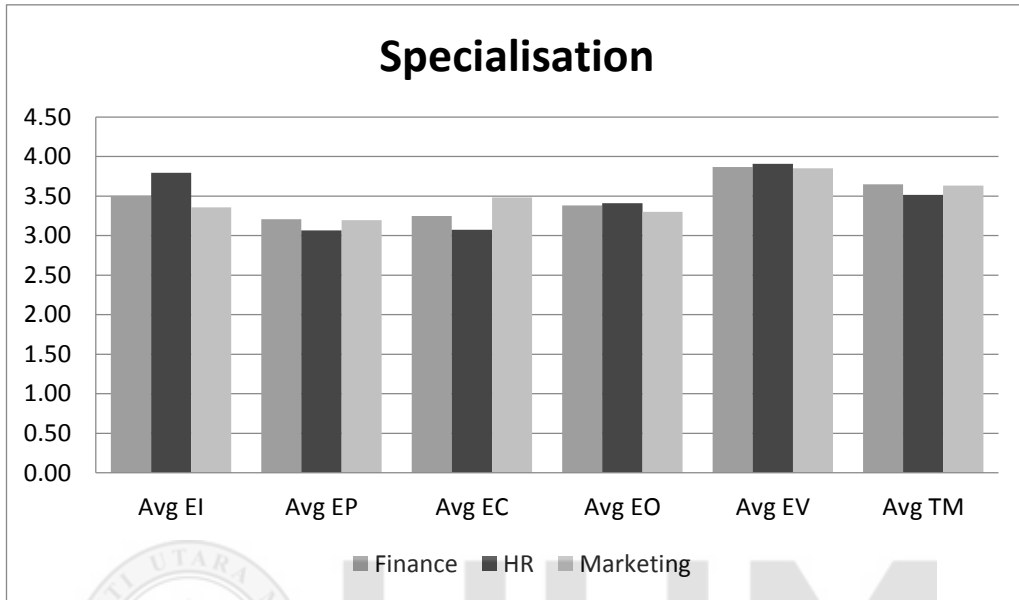
Age

| Age | EI | EP | EC | EO | EV | TM |
|-----|------|------|------|------|------|------|
| 20 | 2.71 | 2.91 | 3.02 | 2.98 | 3.75 | 3.70 |
| 21 | 3.64 | 3.06 | 3.57 | 3.36 | 3.96 | 4.01 |
| 22 | 3.32 | 3.15 | 3.15 | 3.26 | 3.83 | 3.42 |
| 23 | 3.46 | 3.27 | 3.43 | 3.40 | 3.81 | 3.65 |
| 24 | 3.97 | 3.15 | 3.26 | 3.52 | 4.07 | 3.82 |
| 25 | 3.81 | 3.62 | 3.49 | 3.45 | 3.79 | 3.92 |
| 26 | 3.01 | 2.97 | 3.09 | 3.19 | 3.68 | 3.20 |
| 27 | 2.63 | 3.07 | 3.29 | 3.50 | 3.75 | 2.96 |



Specialisation

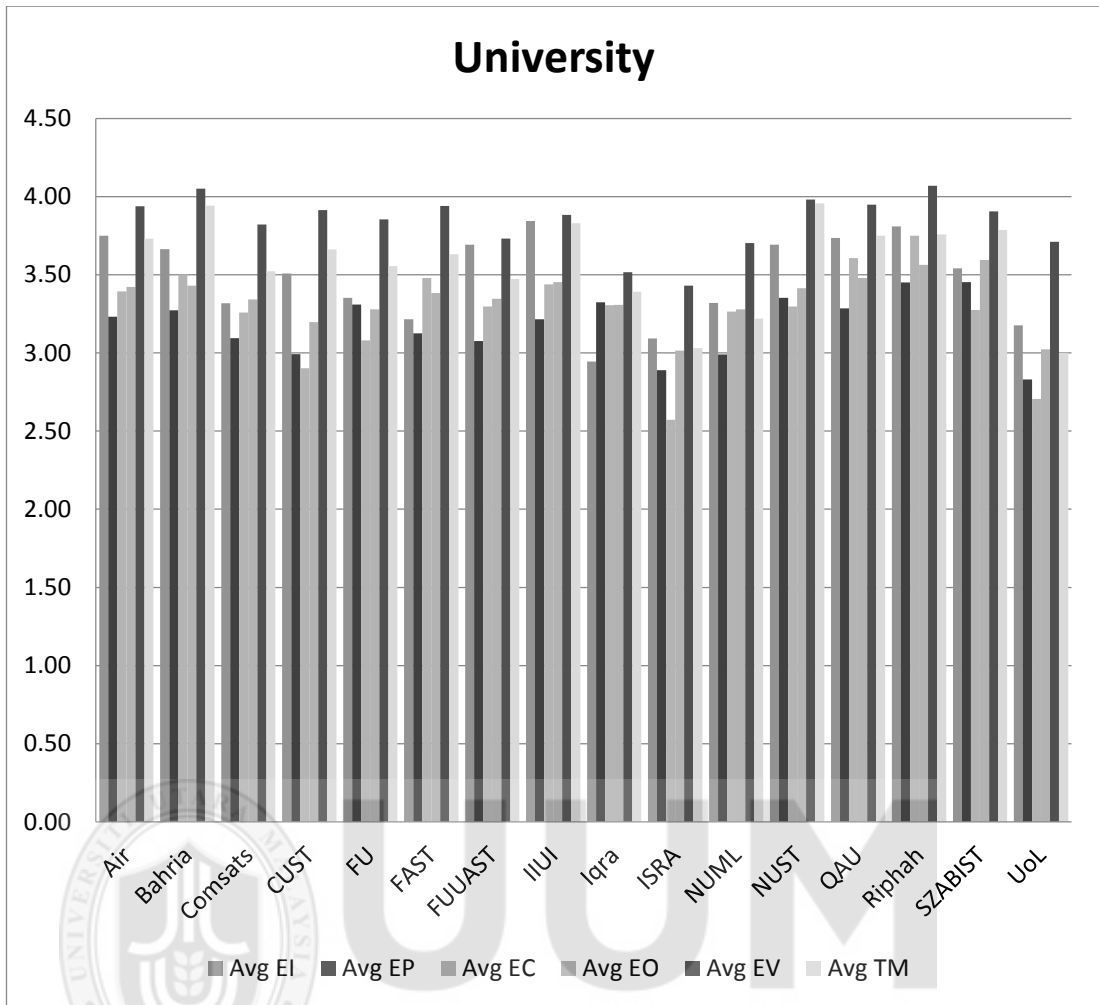
| Specialisation | EI | EP | EC | EO | EV | TM |
|----------------|------|------|------|------|------|------|
| Finance | 3.50 | 3.21 | 3.25 | 3.38 | 3.87 | 3.65 |
| HR | 3.79 | 3.07 | 3.07 | 3.41 | 3.91 | 3.52 |
| Marketing | 3.36 | 3.20 | 3.48 | 3.30 | 3.85 | 3.63 |



UUM
Universiti Utara Malaysia

University

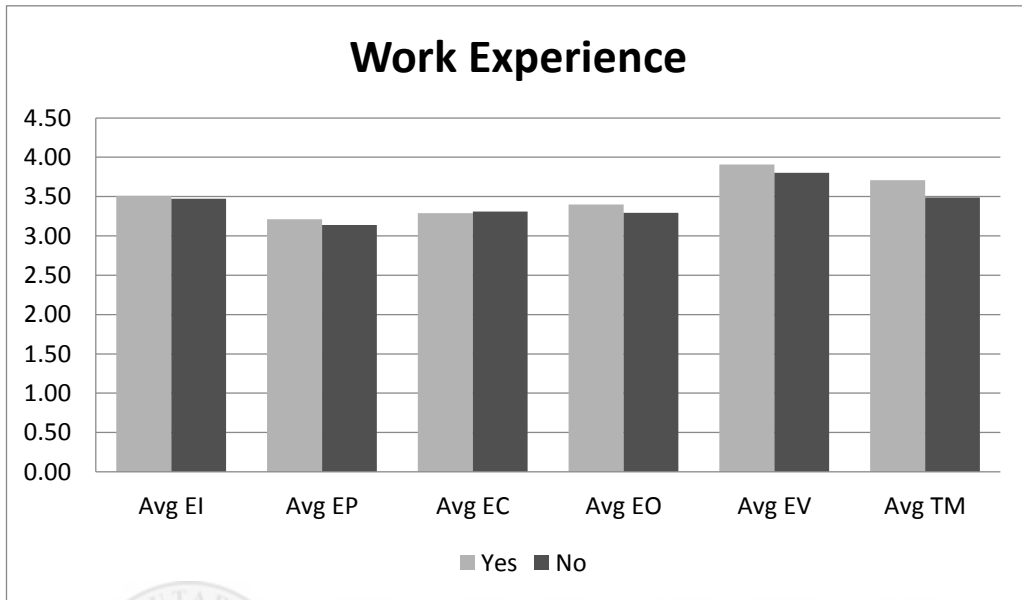
| University | EI | EP | EC | EO | EV | TM |
|---|------|------|------|------|------|------|
| Air University | 3.75 | 3.23 | 3.39 | 3.42 | 3.94 | 3.73 |
| Bahria University | 3.66 | 3.27 | 3.50 | 3.43 | 4.05 | 3.94 |
| Comsats University | 3.32 | 3.09 | 3.26 | 3.34 | 3.82 | 3.52 |
| Capital University of Science and Technology (CUST) | 3.51 | 2.99 | 2.90 | 3.20 | 3.91 | 3.66 |
| Foundation University (FU) | 3.35 | 3.31 | 3.08 | 3.28 | 3.85 | 3.56 |
| Foundation for Advancement of Science and Technology (FAST) | 3.22 | 3.13 | 3.48 | 3.38 | 3.94 | 3.63 |
| Federal Urdu University of Arts Science and Technology (FUUAST) | 3.69 | 3.08 | 3.30 | 3.35 | 3.73 | 3.47 |
| International Islamic University Islamabad (IIUI) | 3.84 | 3.21 | 3.44 | 3.45 | 3.88 | 3.83 |
| Iqra University | 2.94 | 3.32 | 3.30 | 3.31 | 3.52 | 3.39 |
| ISRA University | 3.09 | 2.89 | 2.57 | 3.01 | 3.43 | 3.03 |
| National University of Modern Languages (NUML) | 3.32 | 2.99 | 3.26 | 3.28 | 3.70 | 3.22 |
| National University of Science and Technology (NUST) | 3.69 | 3.35 | 3.30 | 3.41 | 3.98 | 3.96 |
| Quaid e Azam University QAU | 3.74 | 3.29 | 3.61 | 3.48 | 3.95 | 3.75 |
| Riphah University | 3.81 | 3.45 | 3.75 | 3.56 | 4.07 | 3.76 |
| Shaheed Zulfiqar Ali Bhutto Institute of Science and Technology (SZABIST) | 3.54 | 3.45 | 3.27 | 3.59 | 3.91 | 3.79 |
| University of Lahore (UoL) | 3.18 | 2.83 | 2.71 | 3.02 | 3.71 | 3.00 |



Universiti Utara Malaysia

Work Experience

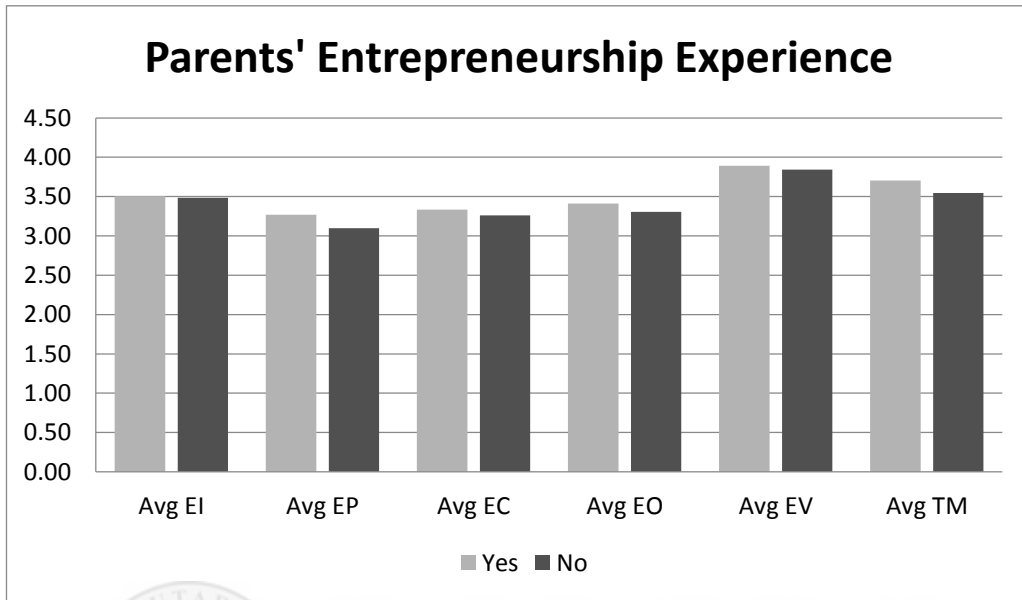
| | EI | EP | EC | EO | EV | TM |
|-----|------|------|------|------|------|------|
| Yes | 3.51 | 3.21 | 3.29 | 3.40 | 3.91 | 3.71 |
| No | 3.47 | 3.14 | 3.31 | 3.29 | 3.80 | 3.49 |



UUM
Universiti Utara Malaysia

Parents' Entrepreneurship Background

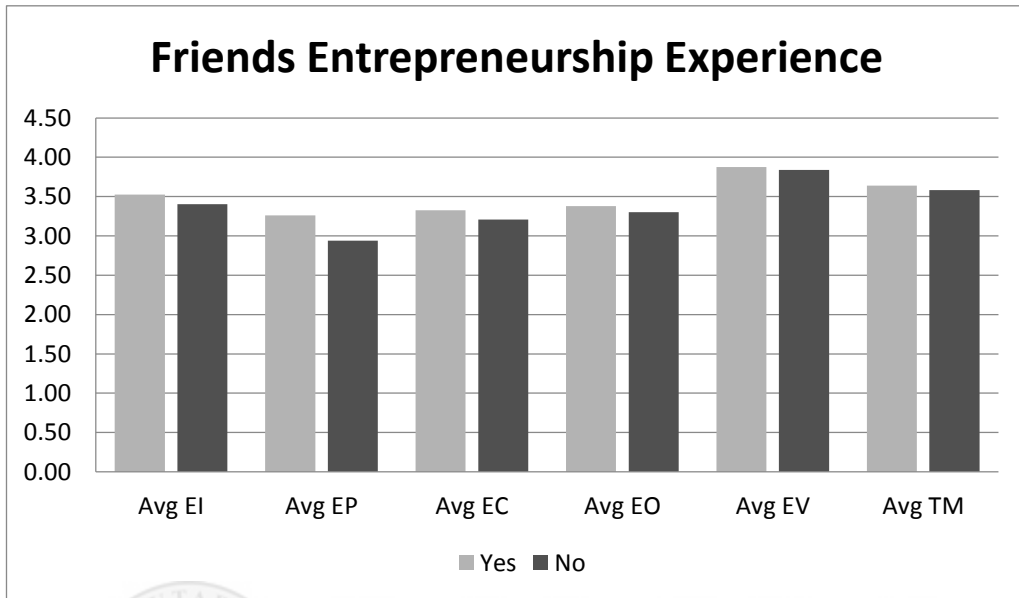
| | EI | EP | EC | EO | EV | TM |
|-----|------|------|------|------|------|------|
| Yes | 3.50 | 3.27 | 3.33 | 3.41 | 3.89 | 3.71 |
| No | 3.49 | 3.10 | 3.26 | 3.31 | 3.84 | 3.55 |



UUM
Universiti Utara Malaysia

Friends' Entrepreneurship Background

| | EI | EP | EC | EO | EV | TM |
|-----|------|------|------|------|------|------|
| Yes | 3.52 | 3.26 | 3.33 | 3.38 | 3.88 | 3.64 |
| No | 3.40 | 2.94 | 3.21 | 3.30 | 3.84 | 3.58 |

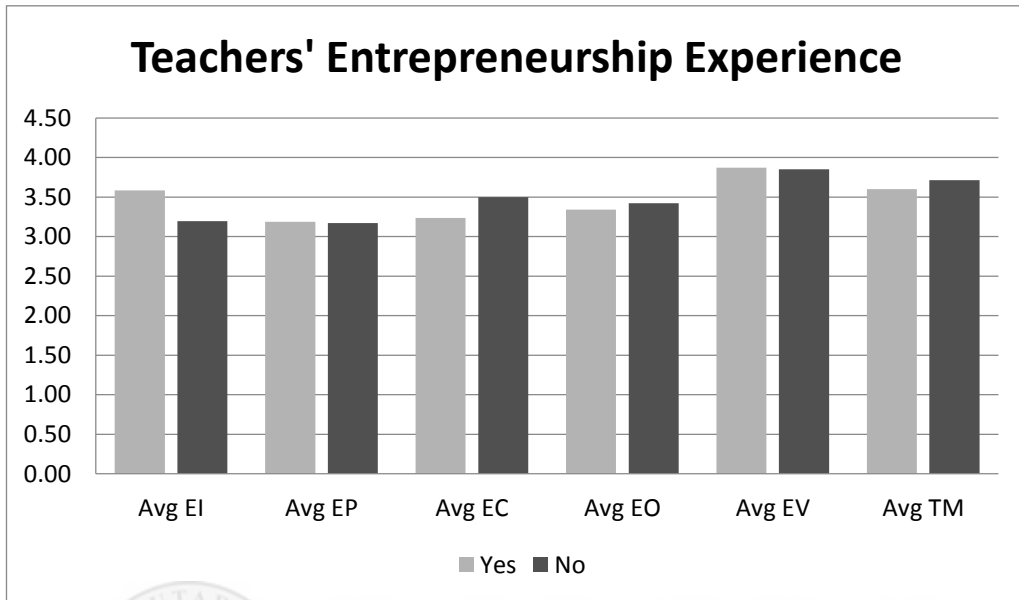


UUM

Universiti Utara Malaysia

Teachers' Entrepreneurship Experience

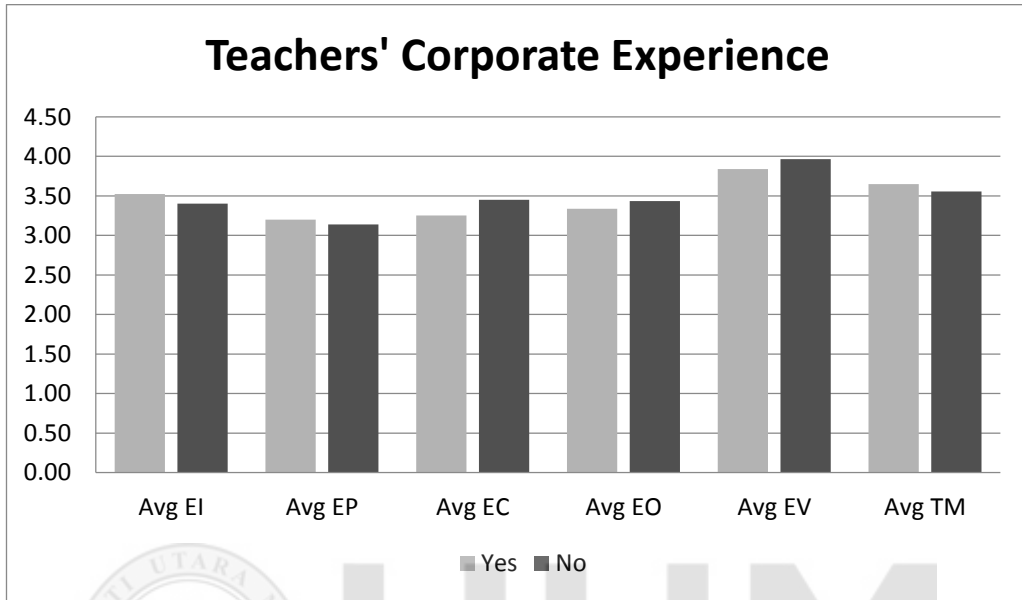
| | EI | EP | EC | EO | EV | TM |
|-----|------|------|------|------|------|------|
| Yes | 3.59 | 3.19 | 3.24 | 3.34 | 3.87 | 3.60 |
| No | 3.19 | 3.17 | 3.50 | 3.42 | 3.85 | 3.71 |



UUM
Universiti Utara Malaysia

Teachers' Corporate Experience

| | EI | EP | EC | EO | EV | TM |
|-----|------|------|------|------|------|------|
| Yes | 3.52 | 3.20 | 3.25 | 3.34 | 3.84 | 3.65 |
| No | 3.40 | 3.14 | 3.45 | 3.43 | 3.96 | 3.56 |



UUM
Universiti Utara Malaysia